

Wage and Employment Cyclicalities at the Establishment Level*

Christian Merkl^{a,b,c} and Heiko Stüber^{d,a,b}

^aFriedrich-Alexander-Universität Erlangen-Nürnberg (FAU), ^bIZA,

^cCESifo, ^dInstitute for Employment Research (IAB)

Abstract

Although the quantitative relationship between employment and wage cyclicalities is central for macroeconomic models, there is little empirical evidence on this topic. We use the rich German AWFEP dataset to document that wage cyclicalities are very heterogeneous across establishments. Based on this heterogeneity, we estimate the relationship between employment cyclicalities and wage cyclicalities at the establishment level. We use this micro-estimate as a calibration target for a macro labor market flow model with heterogeneous wage dynamics that nests the standard search and matching model. Based on this micro-macro linkage, we provide a new quantitative benchmark for the role of wage rigidity in search and matching models. If all establishments behaved as the most procyclical in the data, labor market amplification would decline by 30 percent. If all followed Nash bargaining, it would decline by more than two-thirds.

JEL classification: E32, E24, J64.

Keywords: Wage Cyclicalities, Employment Cyclicalities, Labor Market Flow Model, Labor Market Dynamics, Establishments, Administrative Data.

*This paper supersedes the earlier IZA Discussion Paper No. 11051, entitled: "Wage Cyclicalities and Labor Market Dynamics at the Establishment Level: Theory and Evidence."

Corresponding author: Christian Merkl, Friedrich-Alexander-Universität Erlangen-Nürnberg, Chair of Macroeconomics, Lange Gasse 20, 90403 Nürnberg, Germany. E-mail: Christian.Merkl@fau.de.

1 Introduction

The question of how real wages evolve over the business cycle has been of crucial importance in macroeconomics for many decades.¹ In search and matching models, more rigid wages are known to lead to a stronger response of the job-finding rate and unemployment in response to aggregate shocks (e.g., Shimer, 2005; Hall, 2005; Hall and Milgrom, 2008; Christiano et al., 2021). Against this background, there is a growing empirical literature on how cyclical the wages of newly hired workers are (e.g., Carneiro et al., 2012; Martins et al., 2012; Haefke et al., 2013; Kudlyak, 2014; Basu and House, 2016; Stüber, 2017; Schaefer and Singleton, 2019; Gertler et al., 2020).² If wage rigidity is an important amplifier for the aggregate labor market, this should be visible in terms of the empirical link between employment dynamics and wage dynamics at the establishment level. Due to the lack of sufficiently rich panel data, there is little empirical evidence on this issue.³ However, there is some evidence on the effects of wage rigidities on flow rates (e.g., Ehrlich and Montes, 2020).

Our paper fills this gap by investigating whether there is a meaningful empirical relationship between employment cyclicalities and wage cyclicalities at the establishment level. Using the Administrative Wage and Labor Market Flow Panel (AWFP), which covers the entire population of German establishments, we exploit the cross-sectional heterogeneity of wage cyclicalities. About two-thirds of German establishments have procyclical wages, while about one-third have countercyclical wages. We are the first to document a meaningful and robust negative relationship between wage and employment cyclicalities at the establishment level (after controlling for potential compositional effects). To make aggregate statements based on this relationship, we propose a labor market flow framework that can be calibrated to the (substantial) cross-sectional dispersion of wages and the empirical relationship between wage and employment cyclicalities. At the same time, the homogeneous version of the model nests the standard search and matching model, which allows us to make statements about the Shimer puzzle. We discipline our model with the empirical results and perform several counterfactual exercises to find out to what extent wage cyclicalities matter for the dynamics of the aggregate labor market. When we eliminate wage heterogeneity around the median establishment, the aggregate labor market dynamics remain almost unaffected. This does

¹See, e.g., Bils (1985); Blanchard and Fischer (1989); Mankiw (1989); Beaudry and DiNardo (1991); Solon et al. (1994); Pissarides (2009).

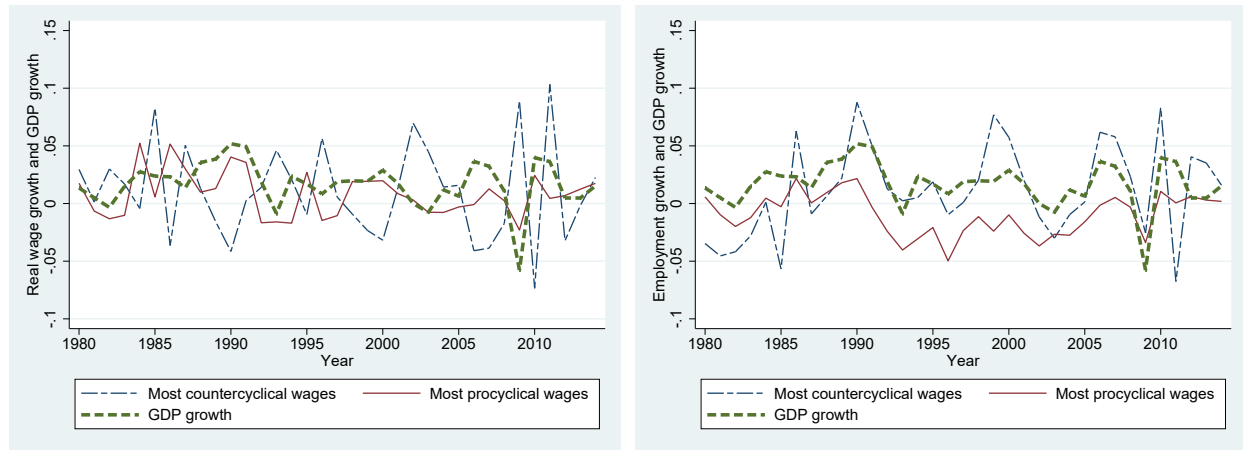
²In addition, there is an emerging literature documenting the impact of downward nominal wage rigidity (DNWR) on labor market flows at the establishment level (for the United States, e.g., Kurmann and McEntarfer, 2019). For establishments in Germany, Ehrlich and Montes (2020) find a meaningful connection between DNWR and labor market flows using linked employer-employee data.

³A notable exception is Carlsson and Westermarck (2022) who show that the cyclicalities of incumbents' wages matter for the dynamics of the separation rate.

not mean, however, that wage cyclicality and its heterogeneity are unimportant for aggregate dynamics. If all establishments behaved as the most procyclical establishments at the 90th percentile of the distribution, labor market amplification would fall by around 30 percent. The introduction of standard Nash bargaining leads to even more procyclical wages and a two-third decline in labor market amplification. In summary, our combination of microeconomic estimations and macroeconomic modeling shows that wage cyclicalities are very important for both establishment-level labor adjustment and aggregate labor market dynamics. Compared to Nash bargaining, the German labor market exhibits three times larger fluctuations due to actual wage dynamics.

Our paper shows that the economy-wide average wage cyclicality over the business cycle masks that establishments have heterogeneous wage cyclicalities: The majority of establishments behave procyclically over the business cycle, driving the average aggregate procyclicality. However, nearly 34 percent of establishments in our baseline sample behave countercyclically, some of them strongly.

Figure 1: Mean Real Daily Wage Growth and Mean Employment Growth of the Establishments with the Most Procyclical and Most Countercyclical Wages



1.1: Mean Real Daily Wage Growth

1.2: Mean Employment Growth

Note: West Germany (excluding Berlin), 1979–2014. Establishments with the most procyclical (countercyclical) wage are those equal to or above (below) the 80th (20th) percentile of our wage cyclicality measure α_{1i} in the given year (see Section 2.2). α_{1i} are estimated using the number of aggregated full-time employment as the business cycle indicator, using the full universe of establishments (employment weighted results; extreme outliers dropped, see Footnote 12).

Figure 1.1 illustrates this key result by showing mean real daily wage growth for 20 percent of establishments with the most procyclical and the most countercyclical wages, respectively. The former have a clearly visible positive correlation of real wage growth with real GDP growth (+0.62), while the correlation is negative for the latter (-0.49). Moreover, our paper

estimates the impact of different real wage cyclicalities on employment cyclicalities: more procyclical wage establishments have less procyclical employment cyclicalities. Figure 1.2 illustrates that the most countercyclical wage establishments have more volatile employment adjustment than the most procyclical wage establishments.

While Figure 1 shows purely descriptive results based on aggregated full-time employment as business cycle indicator, in the paper, we estimate these effects at the establishment level. We take several steps to prevent our empirical results from being driven by composition effects. In our baseline specifications, we use sectoral employment as sector-specific business cycle indicator. We control, *inter alia*, for establishment fixed effects and changes in mean worker characteristics. The paper includes several robustness checks: For example, our results are not driven by heterogeneities between sectors or by small establishments. Our results also remain robust when we exclude the Great Recession from our regressions (where the adjustment in hours per worker was large) or when we exclude short-lived establishments.

We also discuss possible causes of heterogeneity in wage cyclicalities across establishments and the implications for employment cyclicalities. Given that the AWFP is an administrative dataset, we do not have any direct evidence on the unionization of the workforce or the bargaining regime chosen by establishments. However, we can link the AWFP to the IAB Establishment Panel (see Ellguth et al., 2014). Using this linked data, we find a nonlinear pattern between quintiles of wage cyclicity and bargaining regimes. The share of establishments participating in collective bargaining is lower for establishments with both strongly procyclical and strongly countercyclical wages than for other establishments.

In order to make macroeconomic statements, our paper looks at the effects of wage cyclicity through the lens of a model with random search. We propose a model with labor market flows and heterogeneous wage cyclicalities. We use a simple mechanism where establishments select a certain fraction of applicants based on their idiosyncratic match-specific training costs (in the spirit of Chugh and Merkl, 2016). Our model is able to replicate the fact that almost all establishments hire at any point in the data, and it is well suited to be calibrated to the relationship between wages and employment in the data. Moreover, following Merkl and van Rens (2019), we show that the homogeneous version of our model (i.e., without heterogeneous wage cyclicity) can be made observationally equivalent to the standard search and matching model by using certain assumptions on the idiosyncratic distribution of training costs. We use this feature to contribute to the debate initiated by Shimer (2005).

To make quantitative statements on the role of heterogeneities and wage cyclicalities for aggregate labor market amplification, we fit our model to two important dimensions from the data: the heterogeneity of wage cyclicity across establishments and the impact

of wage cyclicality on employment cyclicality. This disciplines the effects of our three counterfactual exercises. First, setting the wage cyclicality of all establishments to that of the median establishment, aggregate amplification changes very little relative to our baseline scenario because the heterogeneity is relatively symmetric around the median establishment. Second, fixing the wage cyclicality of all establishments to that of the most procyclical establishments, about 30 percent of labor market amplification gets lost. Thus, heterogeneity of wage cyclicality matters because a large fraction of establishments is either acyclical or even countercyclical. These establishments amplify the reaction of the German labor market to aggregate shocks. Third, assuming that all establishments follow standard Nash bargaining, the standard deviations of the hiring rate and unemployment fall by around two-thirds of their initial level. In other words, we show that a major share of German labor market amplification is due to observed wage cyclicality that are much less procyclical than under Nash bargaining.

The paper proceeds as follows. Section 2 presents the AWFP dataset. Section 3 documents the heterogeneity of real wage cyclicality and employment cyclicality across establishments. Section 4 estimates the relationship between employment cyclicality and wage cyclicality at the establishment level (including various robustness checks). Section 5 derives the model, calibrates it against the empirical results, and shows counterfactual results. Section 6 provides conclusions.

2 Data

2.1 Administrative Wage and Labor Market Flow Panel

The Administrative Wage and Labor Market Flow Panel (AWFP, see Stüber and Seth, 2018) aggregates German administrative (register) data from the worker to the establishment level for the years 1975 to 2014. The underlying administrative microeconomic data source is mainly the Employment History (Beschäftigtenhistorik, BeH) of the Institute for Employment Research (IAB). The BeH contains information on each worker subject to social security contributions in Germany. Before aggregating the data to the establishment level, several corrections and imputations were performed at the micro level.

The AWFP provides a long time series for wages and labor market flows for each establishment in Germany. This is a major advantage compared to existing datasets and it allows us to exploit time variation at the establishment level. One drawback of the AWFP, or register data in Germany more generally, is that it does not provide information on the exact number of hours worked. Therefore, in order to have a homogeneous reference group, we restrict

ourselves to full-time workers. Wages are defined as mean real daily wages (deflated by the CPI, in 2010 prices) of all employed full-time workers in a given establishment. Daily wages include the base salary, all bonuses and special payments (such as performance bonuses, holiday pay, or Christmas allowance), fringe benefits, and other monetary compensations received throughout the year (or the duration of the employment spell). Therefore, daily wages are a measure of total compensation rather than a daily base wage. Because establishments are sometimes able to circumvent wage rigidity by adjusting fringe (non-wage) benefits (e.g., Lebow et al., 1999; Grigsby et al., 2021), this wage concept offers significant advantages in studying the relationship between wage and employment cyclicalities (e.g., Ehrlich and Montes, 2020). Daily wages of workers above the contribution assessment ceiling are imputed according to Card et al. (2015) before aggregating the data to the establishment level.

We use the AWFP at the annual frequency and restrict the data to West German establishments (excluding Berlin) and the years 1979–2014 to avoid the break caused by German reunification.⁴ We chose the annual frequency due to the nature of the data. Wages in the AWFP are calculated based on individuals’ employment spells. If an employment spell lasts for the entire calendar year, we would get no quarter-level variation over time in that year. Variations at the quarterly level thus result only from shorter employment spells. We also drop all establishments that change industry or state. Since we control for establishment fixed effects in our regressions, we do not need to control for industry and state.⁵ More detailed information about the AWFP can be found in Appendix A.1.1.

2.2 Baseline Sample

In our baseline regressions, we only include establishments that have an average of at least ten full-time workers and for which we have at least five observations. This choice is motivated by several considerations: First, we want to ensure that our results are not affected by very small establishments that may not be relevant for the overall economy. Second, newly founded establishments are very volatile. Therefore, they may introduce noise in our estimations. According to Brixy et al. (2006), establishments in Germany can be considered mature or established after five years. After that, they no longer differ significantly from older establishments in terms of wage levels and working conditions.⁶ Third, employee dismissal

⁴All stocks are calculated using an “end-of-period” definition. Using the annual frequency, this is December 31st of each year. For more details see Appendix A.1.1.

⁵Since our analysis is based on wage growth and employment growth, we cannot consider establishment creation and closure, as we cannot calculate meaningful growth rates for these cases.

⁶Fackler et al. (2019) also use this threshold and identify establishments as incumbent establishments if they are five years or older. Since we demand at least five observations and use wage and employment growth, we also only consider establishments five years and older.

protection in Germany depends on the number of employees. The statutory protection against dismissal does not apply to employees in small businesses.⁷ This is another reason why we exclude small establishments, which are subject to other institutional regulations. Fourth, from a statistical point of view, our employment cyclicalities and wage cyclicalities measures can be very imprecisely estimated for short-lived establishments with only a few observations. We want to prevent our results from being affected by these establishments.

Table 1: Descriptive Statistics

Variable	AWFP	Baseline sample
Worker-year observations	539,002,807	432,171,298
	100%	80.2%

Note: AWFP restricted to all West German establishments (excluding Berlin) with at least one full-time (regular) worker.

In summary, we expect our sample restrictions to yield more representative and stable results. Despite our restrictions, our baseline sample still covers on average 80.2% of all full-time worker-year observations (see Table 1), with the proportion varying between 76.8% and 82.7% over the years 1979–2014. In addition, our baseline sample covers 74.5% of all hires. Aggregated time series of selected variables for West Germany (excluding Berlin) constructed using the entire AWFP and our baseline sample, as well as further statistical information on the baseline sample, can be found in Appendix A.1.1. Aggregate dynamics of our baseline sample and the entire AWFP are very similar. The robustness of our baseline results and the choice of our baseline sample are discussed in Section 4.3.

3 Wage and Employment Cyclicalities

In this section, we first estimate the comovement of establishments’ wage growth with sector-specific employment growth. We show that there is substantial heterogeneity across establishments. Typically, worker-specific wages are regressed on aggregate unemployment (growth), e.g., Martins et al. (2012); Haefke et al. (2013); Card et al. (2015); Stüber (2017); Gertler et al. (2020). We deviate from this practice: we use the number of full-time workers, N_t^j , as our business cycle indicator. It can be calculated for different sub-aggregation groups (such as sectors j) from our dataset. In addition, this definition is in line with our wage definition, which is also based on full-time workers, while unemployment and GDP refer to all workers. It is also important to note that we use growth rates instead of levels in our

⁷Over the years, the number of employees from which the statutory protection against dismissal takes effect has changed. Until the end of 2003 it was over five employees, since 2004 it is over ten employees.

regressions, as we are interested in the heterogeneity over the business cycle. In addition, by first differencing, we prevent spurious regressions with non-stationary variables.⁸ Second, we estimate the comovement of establishments' employment growth with a sector-specific employment growth. Here, we also find substantial heterogeneity across establishments. In Section 4, we then analyze the relationship between the employment and wage cyclicalities of establishments.

3.1 Establishments' Wage Cyclicity

We are interested in the heterogeneous reaction across establishments to sectoral business cycle fluctuations. To this end, we estimate the following employment-weighted high-dimensional fixed effects regression:⁹

$$\Delta \ln w_{ijt} = \alpha_0 + \alpha_{1i} \Delta \ln N_t^j + \alpha_2 t + \alpha_3 t^2 + \alpha_4' \mathbf{C}_{it} + \mu_i^w + v_{ijt}^w, \quad (1)$$

where $\Delta \ln w_{ijt}$ is the growth rate of mean real daily wages of establishment i in (industry) sector j in year t and $\Delta \ln N_t^j$ is the growth rate of full-time workers in sector j . α_{1i} shows how strongly the wage growth of establishment i (in sector j) reacts to changes of the (sectoral) business cycle indicator N_t^j (full-time employment), indicating how procyclical or countercyclical a certain establishment is. μ_i is the establishment-fixed effect, and \mathbf{C}_{it} is a vector of control variables including the changes in education shares and gender shares at the establishment level as well as changes in the average age, tenure, and tenure squared of the workers within the establishment. We include changes in these control variables instead of levels to better control for changes in the workforce composition of the establishments. In addition, we include a linear and quadratic time trend.¹⁰

Equation (1) yields over 356 thousand coefficients α_{1i} , which correspond to the number of establishments in our baseline specification.¹¹ Thus, each establishment i has an estimated $\hat{\alpha}_{1i}$ that is fixed for the entire life span. Since we use the raw aggregated AWFP, we drop extreme outliers for our analysis of the connection between wage and employment cyclicalities (see Section 4).¹² To be consistent, the results presented in Tables 2 and 3 exclude these

⁸As a robustness check, we estimate the average wage cyclicity using the baseline sample and show that our results are comparable to results using individual worker data (see Appendix A.2 and A.3).

⁹Using the Stata package `reghdfe` written by Correia (2018).

¹⁰When we exclude the time trend from our regressions, both the heterogeneity of wage cyclicalities and their impact on establishment-specific employment change very little. The same is true if we include year dummies instead of time trends.

¹¹Goodness of fit measures of the regression: observations: 7,259,116; R^2 : 0.24; within R^2 : 0.12.

¹²In all our regressions, tables, and figures, we omit observations with estimated $\hat{\alpha}_{1i}$ (see Section 3.1) and $\hat{\beta}_{1i}$ (see Section 3.2) below the 1th or above the 99th percentile of the corresponding distribution.

outliers.¹³

Table 2: Wage Cyclicalities at Different Disaggregation Levels

Estimated coefficients: $\hat{\alpha}_{1i}$	31 Sectors	National level
Cyclicalities at 10 th percentile	−0.69	−0.89
Cyclicalities at 20 th percentile	−0.27	−0.34
Cyclicalities at 30 th percentile	−0.06	−0.05
Cyclicalities at 40 th percentile	0.09	0.16
Cyclicalities at 50 th percentile	0.22	0.34
Cyclicalities at 60 th percentile	0.35	0.52
Cyclicalities at 70 th percentile	0.49	0.72
Cyclicalities at 80 th percentile	0.69	1.00
Cyclicalities at 90 th percentile	1.06	1.51
Observations	344, 537	344, 396

Note: We drop extreme outliers before the calculation of this table (see Footnote 12).

Table 2 shows that there is substantial heterogeneity in wage cyclicalities across establishments. The second column of Table 2 reports percentiles for the estimated $\hat{\alpha}_{1i}$ for our baseline regression using the sectoral business cycle indicator. The median establishment has about the same cyclicalities as the average establishment (see Table A.2): A 1% larger
200 sectoral employment growth is associated with a 0.22% larger wage growth for the median establishment. While establishments at the 80th percentile show strongly procyclical real wages (0.69), establishments at the 20th percentile show countercyclical real wages (−0.27). Our estimation reveals that about 66 percent of all establishments have procyclical wage
205 setting ($\alpha_{1i} > 0$), while nearly 34 percent of all establishments have a countercyclical wage movement. Our paper is the first to document these facts, as the AWFP offers long time series for wages for each establishment.

The third column in Table 2 reports the estimated $\hat{\alpha}_{1i}$ for different percentiles, using national employment growth as the business cycle indicator instead of sectoral employment
210 growth (the correlation of these two differently estimated wage cyclicalities measures is 0.70). The dispersion of wage cyclicalities increases somewhat at the higher aggregation level. Regardless of the level of aggregation, there is a substantial degree of heterogeneity. Thus, our results on heterogeneous wage cyclicalities are mainly driven by heterogeneities of establishments within sectors.¹⁴

215 It is important to note that in the context of this paper, an establishment with pro-

¹³Therefore, Regressions (1) and (2) estimate over 356 thousand coefficients but about 344 thousand coefficients are presented in Tables 2 and 3. Since we exclude outliers for two different measures, the number of remaining observations differs slightly and depends on the aggregation level of the business cycle indicator.

¹⁴As a robustness check, we also run the regressions separately for the 31 sectors (see Appendix A.4).

cyclical wage movement is one for which an increase in the sectoral employment growth is associated with an increase in establishment wage growth.¹⁵ In contrast, an establishment with countercyclical wage growth is one in which an increase in sectoral employment growth is associated with a decrease in establishment wage growth.

It may come as a surprise that such a large share of establishments exhibit a countercyclical real wage trend over the business cycle. Three comments are in order: First, countercyclical real wages have traditionally been considered a typical feature of Keynesian models (e.g., Bils, 1985; Beaudry and DiNardo, 1991; Solon et al., 1994). Second, it is important to remember that the wage in the AWFP is a measure of total compensation. It contains, inter alia, bonuses¹⁶ and payments made in excess of the collectively agreed minimum. These features provide (some) establishments the flexibility to make real wage cuts in sufficiently severe recessions and stronger wage increases in boom times. Further, Elsbey and Solon (2019) provide evidence that nominal wage cuts are a fairly common phenomenon. Third, even though we refer to countercyclical real wages, it does not necessarily imply that establishments reduce real wages. As we will show in Section 4.2.1, countercyclical wage establishments tend to have a larger fixed effect on their average wage growth. In a boom, therefore, many of them deviate negatively from higher average real wage growth.

3.2 Establishments' Employment Cyclicity

Analogous to Equation (1), we estimate the cyclicity of employment β_{1i} for each establishment:

$$\Delta \ln n_{ijt} = \beta_0 + \beta_{1i} \Delta \ln N_t^j + \beta_2 t + \beta_3 t^2 + \beta_4' \mathbf{C}_{it} + \mu_i^n + v_{ijt}^n, \quad (2)$$

where each establishment i has an estimated $\hat{\beta}_{1i}$ that is fixed for the entire life span. The $\hat{\beta}_{1i}$ show how strongly the employment growth of establishment i (in sector j) reacts to changes of the sectoral business cycle indicator N_t^j (full-time employment). They indicate how procyclical or countercyclical a certain establishment is in terms of its employment. As for wage cyclicity, we estimate this regression employment-weighted.

Table 3 shows that there is (substantial) heterogeneity in employment cyclicalities across establishments.¹⁷ As for wage cyclicity (Table 2), we present results for our baseline speci-

¹⁵Because upswings and downswings in manufacturing may be very different compared to service sectors, we have chosen sectoral business cycle indicators. However, the key message that wage cyclicalities are highly heterogeneous at the establishment level also applies for other indicators such as national GDP. Results are available on request.

¹⁶According to the German Statistical Office, in 2012 bonus payments were 9% of gross earnings for firms with more than ten employees.

¹⁷Goodness of fit measures of the regression: observations: 7,259,116; R^2 : 0.33; within R^2 : 0.14. Please be reminded that we drop extreme outliers (see Footnote 12). Therefore Regression (2) estimates over 356

Table 3: Employment Cyclicalities at Different Disaggregation Levels

Estimated coefficients: $\hat{\beta}_{1i}$	31 Sectors	National level
Cyclicalities at 10 th percentile	−2.12	−2.94
Cyclicalities at 20 th percentile	−0.87	−1.20
Cyclicalities at 30 th percentile	−0.23	−0.30
Cyclicalities at 40 th percentile	0.23	0.29
Cyclicalities at 50 th percentile	0.64	0.82
Cyclicalities at 60 th percentile	1.09	1.39
Cyclicalities at 70 th percentile	1.65	2.11
Cyclicalities at 80 th percentile	2.50	3.16
Cyclicalities at 90 th percentile	4.20	5.13
Observations	344, 537	344, 396

Note: We drop extreme outliers before the calculation of this table (see Footnote 12).

fication — using sectoral employment as the business cycle indicator (column 2) — and using national employment as business cycle indicator (column 3). About 65% of all establishments exhibit procyclical employment movements ($\beta_{1i} > 0$). Again, the dispersion increases somewhat at the higher aggregation level. Regardless of the level of aggregation, however, there is a substantial degree of heterogeneity. Thus, our results on heterogeneous employment cyclicalities are also mainly due to heterogeneities of establishments within sectors.

4 Relationship of Employment and Wage Cyclicalities

In this section, we analyze the relationship between employment and wage cyclicalities at the establishment level. First, we show that establishments with more procyclical wages exhibit less procyclical employment adjustment. Second, we analyze possible reasons for different wage cyclicalities across establishments. Third, we document the robustness of our results along several dimensions.

4.1 Effect of Wage Cyclicalities on Employment Cyclicalities

We have estimated a measure of wage cyclicalities ($\hat{\alpha}_{1i}$, see Section 3.1) and a measure of employment cyclicalities ($\hat{\beta}_{1i}$, see Section 3.2) for each establishment i . This allows us to analyze the relationship between these two measures. We regress $\hat{\alpha}_{1i}$ for each establishment on $\hat{\beta}_{1i}$ of that establishment, weighting by mean establishment size:

$$\hat{\beta}_{1i} = \gamma_0 + \gamma_1 \hat{\alpha}_{1i} + v_{it}^{\hat{\beta}}. \quad (3)$$

thousand coefficients but only about 344 thousand coefficients are presented in Table 3.

Note that Equation (3) is a cross-sectional regression since each establishment has one value for wage cyclicality and one value for employment cyclicality for the observation period. Table 4 shows that there is a negative relationship between the cyclicality of wages and the cyclicality of employment at the establishment level. Establishments whose wages comove more procyclically with sector-specific employment show a less procyclical comovement of their employment with sector-specific employment. Therefore, establishments for which an increase in sectoral employment growth is associated, on average, with an increase in their wage growth are also establishments for which an increase in sectoral employment growth is associated with a decrease in their employment growth.¹⁸

Table 4: Effect of Wage Cyclicality on Employment Cyclicality

Estimated coefficient $\hat{\gamma}_1$	-0.460***
R^2	0.01
Observations	344,537

Note: *** indicates statistical significance at the 1 percent level. We drop extreme outliers before running the regression (see Footnote 12). Regressions are weighted by mean establishment size.

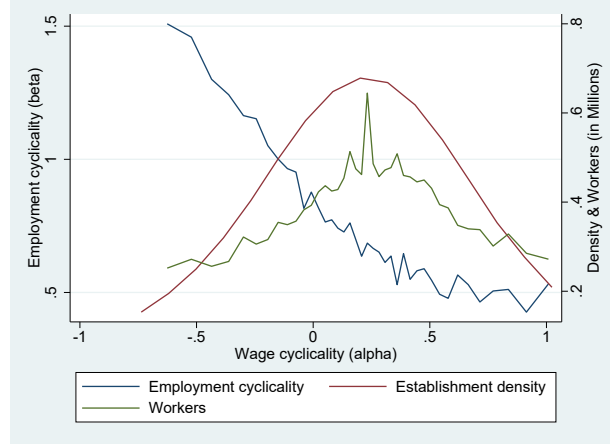
Figure 2 illustrates our result graphically, with the wage cyclicality measure ($\hat{\alpha}_{1i}$) on the horizontal axis and the employment cyclicality measure ($\hat{\beta}_{1i}$) on the vertical axis. We divide establishments into 50 bins according to their $\hat{\alpha}_{1i}$ (with the most countercyclical wage establishments on the left and the most procyclical wage establishments on the right) and calculate the mean $\hat{\beta}_{1i}$ for each bin. Each bin contains 1/50 of all establishments. Therefore, we use narrow bins in areas of the wage cyclicality distribution where we observe many establishments, and then gradually expand the bins in sparser parts of the distribution. As can be seen from the density function, the bin range increases with the absolute value of $\hat{\alpha}_{1i}$. In other words, we observe far more establishments with acyclical or moderately cyclical wages than establishments with strongly procyclical or countercyclical wages. In addition, the number of employees (in millions) per bin is shown in the graph (right-hand side axis).

Figure 2 shows a negative relationship between wage cyclicality and employment cyclicality, which flattens out in the positive part of wage cyclicality. The figure illustrates the estimated regression coefficient from Equation (3): more countercyclical wage establishments are associated with less procyclical employment cyclicality. The negative relationship flattens for strongly procyclical establishments.

What is the underlying economic intuition for the negative relationship between employment cyclicality and wage cyclicality? Imagine two establishments in a boom. Our results

¹⁸Although we have used the sector-specific employment growth rate as a business cycle indicator in our regressions, the response may vary from sector to sector. To check this, we run the same regressions at the sectoral level. The coefficients are negative in most of the 31 sectors (see Appendix A.4).

Figure 2: Mean of Employment Cyclical Measure Along the Wage Cyclical Measure Distribution



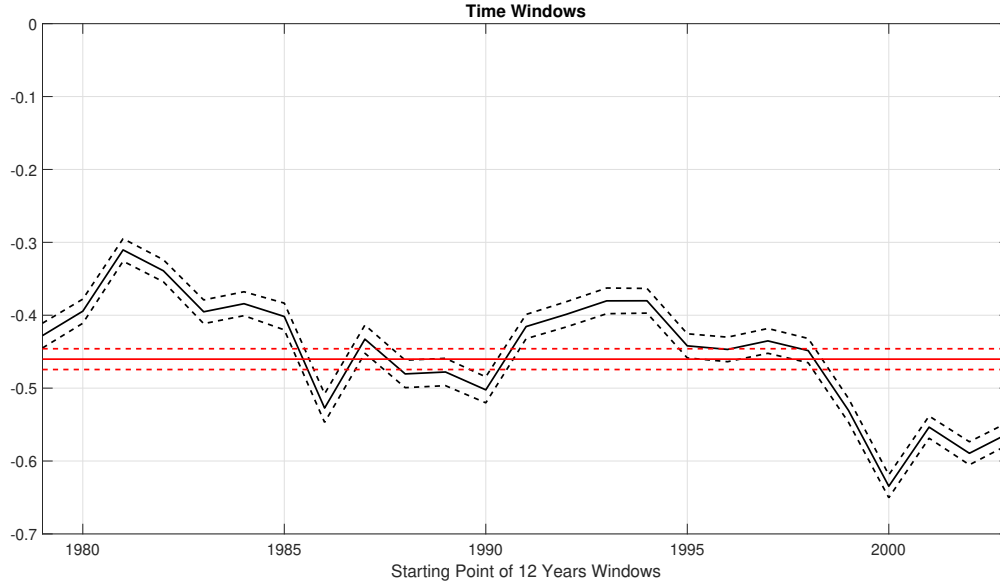
Note: We divide the range of the wage cyclical measure ($\hat{\alpha}_{1i}$, see Section 3.1) into 50 bins. Each bin contains 1/50 of all observations, showing the mean. We drop extreme outliers (see Footnote 12). The figure is showing results for mean $\hat{\alpha}_{1i} \geq$ the 10th percentile and $\hat{\alpha}_{1i} \leq$ the 90th percentile of the estimated $\hat{\alpha}_{1i}$ (see Table 2).

suggest that the establishment with a larger upward adjustment of real wages increases employment by less than the establishment with a smaller positive (or even negative) real wage movement. Although this result appears very intuitive, it is important to emphasize that we are the first to show this relationship between wage and employment cyclicalities based on establishment-level estimates. The previous literature was limited by a lack of suitable datasets for such a link.

Why is this link between wage and employment cyclicalities so important? Our empirical approach provides a quantitative benchmark for various quantitative models. In principle, it would be possible that different wage dynamics represent insurance contracts and therefore do not have a significant impact on labor market dynamics. However, our results suggest that wage cyclicalities matter for establishment-level employment cyclicalities.

Since we estimate a time-invariant indicator for each establishment, we used a long time horizon for our estimations. However, these measures may be unstable over time. From an institutional perspective, we expect wage cyclicalities to be relatively stable over time (i.e., a procyclical wage establishment remains procyclical), as establishments inherit habits and institutions from the past (e.g., the unionization of the workforce or the establishment's culture).

Figure 3: Stability over Time



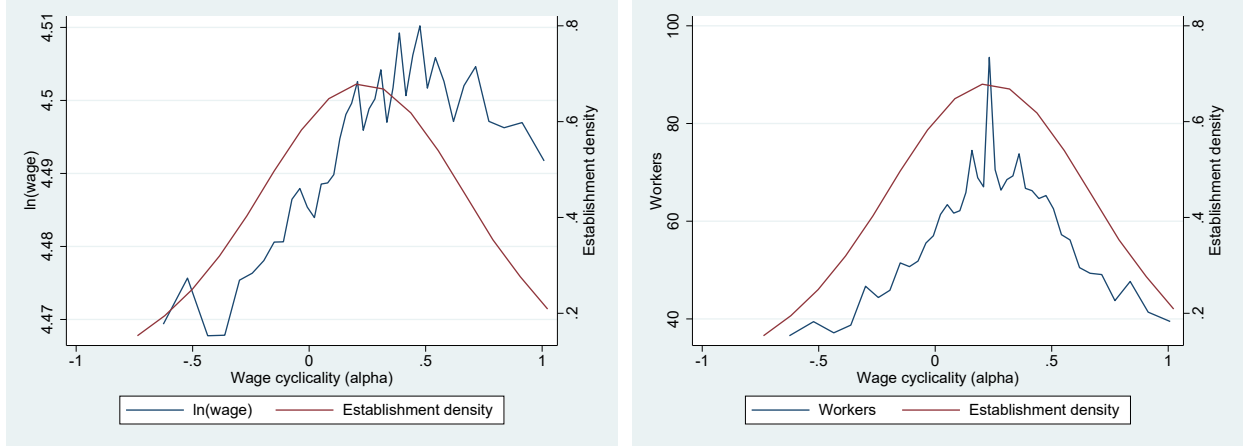
Note: The black solid curve shows the estimated connection between employment cyclicalities and wage cyclicalities for rolling 12 year time windows (from 1979–1990 to 2003–2014). The black dashed curves show 95 percent confidence intervals. The red line is the average estimate for the entire sample (with dashed confidence bands).

To check the robustness of our results in the time dimension, we estimate the effect of wage cyclicalities on employment cyclicalities using 25 rolling 12-year windows (1979–1990 to 2003–2014). Figure 3 shows that the quantitative results are very robust over time. The estimated relationship between employment cyclicalities and wage cyclicalities is statistically significant at the 1 percent level in all cases.

4.2 Potential Drivers

So far, we have documented the heterogeneity of wage cyclicalities across establishments and its impact on the employment cyclicalities. Before checking the robustness of our results, we will discuss potential underlying drivers. The AWFP does not contain any information on unionization or institutional details on wage formation. Therefore, we first document the relationship between establishment wage levels, establishment size, and establishment fixed effects with wage cyclicalities (based on the baseline sample). We then link a subsample of the AWFP to the IAB Establishment Panel, which contains information on institutional details.

Figure 4: Mean Daily Wages and Mean Stock of Full-Time Workers Along the Wage Cyclicity Measure Distribution



4.1: Mean ln(Mean Real Daily Wage)

4.2: Mean Stock of Full-Time Workers

Note: We divide the range of the wage cyclicity measure ($\hat{\alpha}_{1i}$, see Section 3.1) into 50 bins. Each bin contains 1/50 of all observations, showing the mean. We drop extreme outliers (see Footnote 12). The figure is showing results for mean $\hat{\alpha}_{1i} \geq$ the 10th percentile and $\hat{\alpha}_{1i} \leq$ the 90th percentile of the estimated $\hat{\alpha}_{1i}$ (see Table 2).

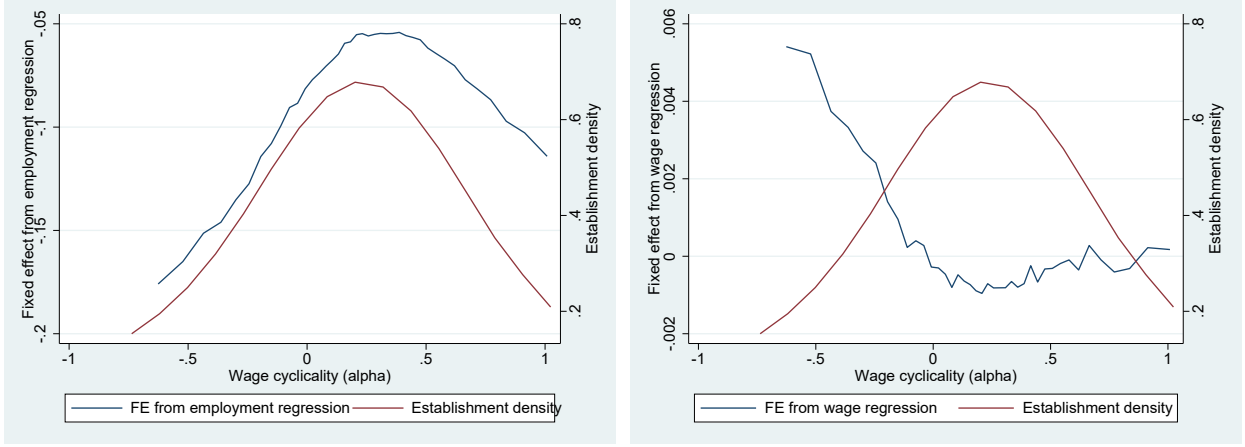
4.2.1 Characteristics of Establishments

Figures 4 and 5 sort establishments according to their wage cyclicalities into 50 bins. Figure 4.1 shows the mean real wage of full-time workers for each bin. Mean wages are slightly higher for establishments with acyclical or procyclical wage cyclicity than for counter-
 320 cyclical establishments. However, these wage differences do not appear to be economically relevant. The lowest value is about 4.48 and the highest about 4.51, i.e., there is only a difference of 3% or less than € 3 gross per worker and day.

Figure 4.2 shows the mean number of full-time workers for each bin. The picture re-
 325 veals a nonlinear pattern. Strongly procyclical and countercyclical wage establishments are similar in size. In contrast, moderately procyclical wage establishments (in the middle of the distribution) are larger in size. Note that a similar qualitative picture emerges when the sampling restrictions are removed. Obviously, this fact may be related to the industrial relation regime. It is well known that larger establishments are more likely to be involved in
 330 collective bargaining (see Section 4.2.2 for details).

In Appendix A.5, we present some statistics for pro- and countercyclical establishments ($\hat{\alpha}_{1i} > 0$ and $\hat{\alpha}_{1i} < 0$, respectively) as well as for strongly countercyclical ($\hat{\alpha}_{1i} \leq$ 20th percentile), strongly procyclical establishments ($\hat{\alpha}_{1i} \leq$ 80th percentile), and acyclical and moderately cyclical establishments (20th percentile $< \hat{\alpha}_{1i} <$ 80th percentile). Statistics for
 335 the baseline sample itself are presented in Table A.1 in Appendix A.1.1.

Figure 5: Establishment Fixed Effects from the Employment and Wage Regression Along the Wage Cyclical Measure Distribution



5.1: Fixed Effects from the Employment Regression (μ_i^n)

5.2: Fixed Effects from the Wage Regression (μ_i^w)

Note: We divide the range of the wage cyclical measure ($\hat{\alpha}_{1i}$, see Section 3.1) into 50 bins. Each bin contains 1/50 of all observations, showing the mean. We drop extreme outliers (see Footnote 12). The figure is showing results for mean $\hat{\alpha}_{1i} \geq$ the 10th percentile and $\hat{\alpha}_{1i} \leq$ the 90th percentile of the estimated $\hat{\alpha}_{1i}$ (see Table 2).

In addition to linking the measure of wage cyclical to descriptives, we show the relationship with the estimated establishment fixed effects. Figure 5.1 shows the relationship between wage cyclical and the establishment fixed effect (μ_i^n) from the employment cyclical regression (Equation (2)). The establishment fixed effect is largest for establishments with moderately procyclical wages. A larger establishment fixed effect means that an establishment has a larger average employment growth rate. This can be connected to Figure 4.2. Establishments with the highest average employment growth rate (over a long time horizon) are those with the largest size.

Figures 5.2 provides a link between the wage cyclical of establishments and their establishment fixed effect (μ_i^w) from the wage regression (Equation (1)). This figure reveals an insightful relationship for countercyclical wage establishments. A more countercyclical wage is associated with a larger establishment fixed effect. In other words: In establishments with (strongly) countercyclical wages, average real wage growth is greater than in procyclical establishments. Recall that we found that a large fraction of establishments has countercyclical real wages. Accounting for the establishment fixed effects puts this result into perspective. Countercyclical wage establishments do not necessarily lower real wages in booms, but merely show a negative deviation from their average positive real wage growth.

4.2.2 Industrial Relations

We are not in a position to provide a definitive to the causes of heterogeneity in the wage cyclicalities. Instead, we are the first to document these heterogeneities and their implications. However, this subsection links the AWFP to the IAB Establishment Panel (EP). In this way, we can provide some anecdotal evidence (at the cost of losing about 95% of our observations).¹⁹ The IAB EP is an annual survey of establishments in Germany that has been conducted since 1993. It targets a representative sample of about 15,000 to 16,000 establishments per year. It covers various topics, such as the business performance and strategies, and institutional information (e.g., works councils, collective agreements, ownership structure) among others (see Ellguth et al. (2014) and Appendix A.1.2).

Table 5 shows the fraction of establishments (weighted by size) in different bargaining regimes for five quintiles of wage cyclicalities. We determine the wage cyclicity quintile using our AWFP baseline sample results and using the survey answers (if available).²⁰ Note that we sort the quintiles from the most countercyclical group (quintile 1) to the most procyclical group (quintile 5).

Table 5: Wage Bargaining Regime and Works Council

	Quintile of wage cyclicalities				
	1	2	3	4	5
Wage bargaining regime					
Collective bargaining	50.3	62.6	70.0	68.5	56.1
Firm level bargaining	9.4	8.7	7.4	7.6	7.8
Works council (in %)					
Yes	47.4	58.9	68.5	67.7	55.5

Note: We determine the wage cyclicity quintile with the full AWFP sample and use the (min-mode) survey answers (if available) of the IAB Establishment Panel. Quintile 1 (5) are the most countercyclical (procyclical) wage establishments. Results are weighted by establishment size.

Source: AWFP linked to the IAB Establishment Panel for the years 1993–2014.

In this way, clear patterns can be demonstrated. A larger share of establishments in quintiles 3 and 4 (i.e., those with acyclical and moderately procyclical wages) are part of the collective bargaining agreement. In addition, a larger share of these establishments have a works council (see Table 5).²¹ It seems entirely plausible to us that both collective

¹⁹Information on the wage bargaining regime is available for 17,508 establishments of our baseline sample and information on the existence of works councils for 18,003 establishments.

²⁰The patterns are very similar whether we use a specific base year in the survey or an average of the answers (since the bargaining regime or the existence of a works council may change over time). The results in Table 5 are obtained by using the response mode of an establishment.

²¹Works councils are the elected worker representation at the establishment level who have a say in certain important decisions such as dismissals.

bargaining and works councils are associated with more moderate real wage movements over the business cycle. Collective bargaining agreements represent only constitute minimum wage payments (i.e., higher wage increases are possible). However, it can be assumed that collective agreements are an important anchor for the wage formation of establishments that have chosen to participate in the agreement.²² Although works councils do not play a formal role in wage negotiations, their existence is known to be correlated with wage outcomes (see, e.g., Addison et al., 2010). It is thus in line with our expectations that a higher share of works councils are associated with more moderate real wage cyclicalities.²³

In short, establishments with moderately procyclical wages tend to be larger, are covered by a collective bargaining agreement, and are more likely to have a works council. From a theoretical perspective, these facts are straightforward to explain. Being part of a collective bargaining means that wages tend to be adjusted in line with the sector-specific business cycle. In contrast, based on our dataset, we cannot provide an explanation for why some establishments exhibit strongly procyclical wages and others exhibit countercyclical wages, even though they appear comparable in terms of the observable characteristics shown, such as size or collective bargaining.

Using the IAB EP, we also checked whether an additional control for the presence of a works council or for establishments' participation in collective bargaining affects our regression results. In both cases, the introduction of the new control variable has virtually no effect on the effect of wage cyclicity on employment cyclicity ($\hat{\gamma}_1$). Results are available upon request.

4.3 Further Robustness Checks

In what follows, we perform several robustness checks. First, we show that our baseline sample restrictions lead to more representative and stable results by restricting and relaxing the restrictions on mean workers and the number of observations. Second, we discuss and analyze the role of newly hired versus incumbent workers. Third and fourth, we discuss composition effects and working time effects, respectively.

4.3.1 Establishment Size and Short-Lived Establishments

To analyze the role of establishment size, we run our regressions using the entire AWFP (i.e., including establishments of all sizes) and for a sample of establishments with on average at

²²Of course, this may also apply to some establishments that are not formally part of the collective agreement. However, these can undermine the collective conditions.

²³In the IAB Establishment Panel, larger establishments are overrepresented (see Ellguth et al., 2014). This means that the share of collective bargaining is overrepresented compared to all establishments.

least 20 full-time workers. Table 6 shows that the estimated coefficient $\hat{\gamma}_1$ increases when we exclude smaller establishments from the sample. This confirms our conjecture that small establishments are noisier because they may have zero full-time workers in certain periods.

405 In addition, small size may generate extreme growth rates. Moreover, it shows that our results are not driven by small establishments (which would be worrisome). In contrast, we obtain a stronger correlation the larger the establishments are.

Table 6: Effect of Wage Cyclicalilty on Employment Cyclicalilty — Altering the Mean Establishment Size

Mean size	all	10	20
Estimated coefficient $\hat{\gamma}_1$	-0.292***	-0.460***	-0.500***
R^2	0.01	0.01	0.01
Observations	2,298,507	344,537	177,151

Note: *** indicates statistical significance at the 1 percent level. Baseline regression result in bold. We drop extreme outliers before running the regression (see Footnote 12). Regressions are weighted by mean establishment size.

To analyze the role of short-lived establishments, we run our baseline regressions without restrictions on the number of observations in the sample and with a least ten and 15
410 observations, respectively. Table 7 shows that the estimated coefficient converges to a level of around -0.46 with a least five observations and remains at this level, or slightly higher.

Table 7: Effect of Wage Cyclicalilty on Employment Cyclicalilty — Altering the Minimal Number of Required Observations per Establishment

Required observations	2	5	10	15
Estimated coefficient $\hat{\gamma}_1$	-0.312***	-0.460***	-0.542***	-0.530***
R^2	0.00	0.01	0.02	0.02
Observations	405,060	344,537	270,426	214,191

Note: *** indicates statistical significance at the 1 percent level. Baseline regression result in bold. We drop extreme outliers before running the regression (see Footnote 12). Regressions are weighted by mean establishment size.

Overall, these results are consistent with our conjecture that small establishments and short-lived establishments may add noise to the regressions. Based on these results, we consider the sample restrictions for our baseline regressions to be appropriate.

415 4.3.2 Newly Hired versus Incumbents Workers

Pissarides (2009) and Haefke et al. (2013) show that in search and matching models, wages for newly hired workers are relevant for job creation, not wages for incumbent workers. In

all of our regressions, we use the wages of all full-time employees, not just those of newly hired workers. Why do we think this is a good strategy?

First of all, Stüber (2017) shows based on individual-level regressions that wage cyclicality of newly hired workers over the business cycle in Germany are fairly similar to the wage cyclicality for incumbent workers (i.e., incremental effects are either very small or statistically insignificant). Thus, the distinction between entrants and incumbents is less of an issue for Germany than for other countries.

Second, in Appendix A.3, we estimate the wage cyclicality with respect to unemployment. While Stüber (2017) estimates it at the individual full-time worker level, our wage cyclicality is estimated at the establishment level for full-time workers. At the worker level, Stüber (2017) finds coefficients of -1.26 . At the establishment level, we estimate a coefficient of -1.16 . The estimated elasticities are remarkably similar, which reassures us that our establishment dataset replicates the same cyclicality patterns as worker-level datasets. The slightly lower coefficient at the establishment level is in line with Solon et al. (1994). They argue that using aggregated data instead of microeconomic data leads to an underestimation of wage cyclicality due to a composition bias.

Finally, for econometric reasons (non-stationarity and trends), we have opted for an estimation in first differences. Note that the wage growth for entrants at the establishment level is not a well-defined concept. In our dataset, we do not know an individual’s wage in the previous job or the previous employment spell of the entrant. Thus, we would have to compare the average entrant wages of this period to the previous period (at the establishment level). In this case, composition issues would play a much larger role than for the entire workforce (compositional issues are discussed later in the next section). While the stock of employed workers changes over time, most workers remain from the previous period. By contrast, there are different entrants in each period.

4.3.3 Composition Effects and Incumbent Workers

There may be a concern that our results may be affected by reverse causality due to compositional effects. Imagine an establishment with procyclical employment and completely fixed (acyclical) wages for two worker types: w_l for low-qualified workers and w_h for high-qualified workers, with $w_l < w_h$. If the establishment hires workers during a boom and the proportion of low-qualified and high-qualified workers in the establishment remains constant, the mean wage of the establishment would not change. However, we would observe a countercyclical mean wage if the establishment increases the share of low-qualified workers. Its mean wage would decrease due to a pure composition effect (since $w_l < w_h$ and the share of workers receiving w_l increases).

It is important to emphasize that we take several steps to prevent this type of reverse causality from affecting our results. First, we use full-time workers as our reference group. This group is certainly more homogeneous than total establishment employment, which may include jobs with a small number of hours that can vary widely (e.g., so called mini-jobs). Second, we use the sector-specific employment growth rate as business cycle indicator. Workforces within a sector are expected to be more similar than across sectors in terms of observable and unobservable characteristics. Third, in the first stage of our regressions, we control for time-invariant heterogeneity and changes in various observables (e.g., change of education composition). However, change in unobservable characteristics may still be an influential factor that we have not fully controlled for.

To check for the robustness of the results, we replace the wage growth for all full-time workers with the wage growth of incumbent workers, i.e., employment relationships that already existed in the previous period. The stock of incumbents is more stable in composition than newly hired workers. Therefore, potential composition biases are less of an issue.²⁴ Table 8 shows that the estimated effect ($\hat{\gamma}_1^{\text{incumbents}}$) is even larger than in our baseline estimation ($\hat{\gamma}_1$). This is further evidence that composition effects are not the key driver for our results (see Appendix A.6 for further illustrative evidence).

Table 8: Effect of Wage Cyclicity of Incumbent Workers on Employment Cyclicity

Estimated Coefficient	$\hat{\gamma}_1^{\text{incumbents}}$	$\hat{\gamma}_1$
Coefficient	-0.648***	-0.460***
R^2	0.03	0.01
Observations	257,470	344,537

Note: *** indicates statistical significance at the 1 percent level. Baseline regression result in bold. We drop extreme outliers before running the regression (see Footnote 12). Regressions are weighted by mean number of incumbent workers and mean establishment size, respectively.

Finally, Appendix A.5 shows the estimated distribution of wage cyclicity at different percentiles within establishments (i.e., using the 25th and the 75th percentile instead of the mean daily wage of the establishment). Interestingly, the estimated distribution of wage cyclicity at the 25th and 75th percentiles looks very similar to the average wage. Moreover, the estimated relationship between employment and wage cyclicity for these two percentiles is also negative and statistically significant. This is further evidence that composition is not the key driver for our results.

²⁴We owe this idea to Pedro Martins.

4.3.4 Working Time Effects

Our dataset does not contain information on the number of hours worked. Could the fluctuation of hours generate spurious results? We take several steps to rule out the possibility that hours worked could be driving our results. First, we restrict our analysis to full-time workers. Second, we control for time-varying observable variables and time-invariant unobserved heterogeneity in estimating our establishment-level wage regressions.

In addition, it is worth noting that the extensive margin of labor adjustment is usually much more important than the intensive margin in Germany. Merkl and Wesselbaum (2011) show that the extensive margin can explain more than 80% of aggregate hours fluctuations in Germany (from the 1970s to the Great Recession). However, during the Great Recession, the intensive margin was by far the dominant adjustment mechanism (see Burda and Hunt, 2011). Therefore, we exclude the Great Recession from our regressions (i.e., we run the regressions up to 2006, see Table 9). Compared to the baseline regression result, the quantitative results for the comovement measure become only slightly smaller. Therefore, we believe that intensive margin adjustments cannot be the key driver for our results.

Table 9: Effect of Wage Cyclicalities on Employment Cyclicalities — Excluding the Great Recession

Estimated Coefficient	$\hat{\gamma}_1^{\leq 2006}$	$\hat{\gamma}_1$
Coefficient	-0.436***	-0.460***
R^2	0.01	0.01
Observations	298,054	344,537

Note: *** indicates statistical significance at the 1 percent level. Baseline regression result in bold. We drop extreme outliers before running the regression (see Footnote 12). Regressions are weighted by mean establishment size.

In addition, the adjustment of hours was particularly important in the manufacturing sector during the Great Recession. The manufacturing sector made greater use of measures as short-time work than the service sector. However, looking at the sectoral level, the effects of different wage cyclicalities on employment are very similar for manufacturing and services (see Table A.4 in Appendix A.4).

5 Heterogeneous Wage Cyclicalities: Theory

The previous two sections showed that there is substantial cross-sectional heterogeneity in wage cyclicalities in Germany and that these heterogeneities matter for employment cyclicalities at the establishment level. Given that these results are based on reduced-form

regressions, they do not allow us to analyze how much wage cyclicality matter in aggregate (and not just at the establishment level). Thus, this section looks at the empirical patterns through the lens of a structural model.

We derive a labor market flow model that allows us to match three important facts from the data. First, we want to ensure that the coexistence of wage cyclicality and hiring at any point in time can be replicated. For establishments with more than ten employees, the number varies between 92 and 98 percent. For establishments with more than 50 employees, at least 99 percent hire in any given year. Second, we calibrate our model to the wage cyclicality heterogeneity in the data. Third, we target the estimated interaction between employment cyclicality and wage cyclicality. Matching these three facts allows us to make meaningful statements on the role of wage cyclicality and heterogeneities based on counterfactual exercises.

5.1 Theoretical Model

We require a model that allows for heterogeneous wage cyclicality over the business cycle and the possibility that establishments hire at any point in time. A possible choice would be a segmented labor market framework, as in Barnichon and Figura (2015). However, we find substantial heterogeneity in wage cyclicality independently of the disaggregation level (national or 31 sectors). Thus, market segmentation is not the key driver for different wage cyclicality in Germany and we need to model different wage cyclicality within a labor market segment.

We assume that each establishment obtains an undirected flow of applicants, which is determined by a degenerate contact function. Once workers and establishments get in contact with one another, each worker-establishment pair draws a realization from the same idiosyncratic training cost distribution. Establishments choose an optimal cutoff point and thereby decide about the fraction of workers they want to hire (labor selection). The cutoff point and the hiring rate depend on the wage cyclicality. Hiring will be different (but will not necessarily be shut down) if the wage cyclicality is different from other establishments in the economy.²⁵

Our model setup is similar to Chugh and Merkl (2016). The key difference is that we allow for heterogeneous wage cyclicality across establishments. Under certain assumptions, the homogeneous version of our model delivers globally equivalent job-finding rate and unemployment dynamics as the standard search and matching model (see Appendix A.11 for details, which is based on Merkl and van Rens (2019)). In our quantitative exercise, we will

²⁵We abstract from vacancies because they are not included in the AWF (where we only have stocks, flows, and wages).

impose this equivalence property. This will allow us to connect to the Shimer (2005) puzzle
 535 debate. By setting the wage cyclicalities of all groups to certain benchmarks, we obtain a
 homogeneous version of our model.²⁶

5.1.1 Heterogeneous Groups and Matching

In our model economy, there is a continuum of establishments that differ in terms of their
 wage formation over the business cycle.²⁷ Workers can either be searching or employed.
 540 Employed workers are separated with an exogenous probability ϕ . In each period, search-
 ing workers send their application to one random establishment (i.e., search is completely
 undirected). Thus, each establishment receives a certain fraction of searching workers in the
 economy, where the number of overall contacts in the economy is equal to the number of
 searching workers in the period. This corresponds to a degenerate contact function.

545 Establishments produce with a constant returns technology with labor as the only input.
 They maximize the following intertemporal profit function (with discount factor δ):

$$E_0 \left\{ \sum_{t=0}^{\infty} \delta^t \left[a_t n_{it} - w_{it}^I (1 - \phi) n_{i,t-1} - c_{it} s_t \eta(\tilde{\varepsilon}_{it}) \left(\frac{\bar{w}^E(\tilde{\varepsilon}_{it})}{\eta(\tilde{\varepsilon}_{it})} + \frac{H(\tilde{\varepsilon}_{it})}{\eta(\tilde{\varepsilon}_{it})} + h \right) \right] \right\}, \quad (4)$$

subject to the evolution of the establishment's employment stock in every period:

$$n_{it} = (1 - \phi) n_{i,t-1} + c_{it} s_t \eta(\tilde{\varepsilon}_{it}), \quad (5)$$

where a_t is aggregate productivity, which is subject to aggregate shocks, w_{it}^I is the wage for
 incumbent workers (who do not require any training). We assume that a certain fraction, c_{it} ,
 550 of searching workers, s_t , applies randomly at establishment i . Note that $c_{it} s_t$ is exogenous
 to establishment i .

The applicants who apply at establishment i draw an idiosyncratic match-specific training
 cost shock from a stable density function $f(\varepsilon)$. Establishments of type i will only hire a match
 below a certain threshold $\varepsilon_{it} \preceq \tilde{\varepsilon}_{it}$, i.e., only workers with favorable characteristics will be
 555 selected. This yields the selection rate for establishment i : $\eta(\tilde{\varepsilon}_{it}) = \int_{-\infty}^{\tilde{\varepsilon}_{it}} \varepsilon f(\varepsilon) d\varepsilon$. The term in
 brackets on the right hand side of Equation (4) shows how much the establishment has to pay
 for the average new hires, namely the average wage for an entrant, $\bar{w}^E(\tilde{\varepsilon}_{it})/\eta(\tilde{\varepsilon}_{it})$, the average
 training costs, $H(\tilde{\varepsilon}_{it})/\eta(\tilde{\varepsilon}_{it})$, both conditional on being hired. In addition, there is a fixed

²⁶In Appendix A.9, we also derive a search and matching model with decreasing returns to labor, which
 allows for the coexistence of heterogeneous wage cyclicalities and hiring at any point in time. This framework
 is unable to match the quantitative connection between wage cyclicalities and employment cyclicalities.

²⁷We abstract from establishment entry, i.e., the number of establishments is fixed.

hiring cost component h . We define $\bar{w}^E(\tilde{\varepsilon}_{it}) = \int_{-\infty}^{\tilde{\varepsilon}_{it}} w^E(\varepsilon) f(\varepsilon) d\varepsilon$ and $H(\tilde{\varepsilon}_{it}) = \int_{-\infty}^{\tilde{\varepsilon}_{it}} \varepsilon f(\varepsilon) d\varepsilon$.

Existing worker-establishment pairs are homogeneous and have the following present value:

$$J_{it} = a_t - w_{it}^I + E_t \delta (1 - \phi) J_{it+1}. \quad (6)$$

Solving the maximization problem (see Appendix A.8) yields the evolution of the establishment-specific employment stock and the optimal selection condition:

$$n_{it} = (1 - \phi) n_{it-1} + c_{it} s_t \eta(\tilde{\varepsilon}_{it}), \quad (7)$$

$$\tilde{\varepsilon}_{it} = a_t - w^E(\tilde{\varepsilon}_{it}) - h + E_t \delta (1 - \phi) J_{it+1}. \quad (8)$$

Establishments are indifferent between hiring and not hiring at the cutoff point $\tilde{\varepsilon}_{it}$. An establishment of type i will select all applicants below the hiring threshold, namely:

$$\eta(\tilde{\varepsilon}_{it}) = \int_{-\infty}^{\tilde{\varepsilon}_{it}} f(\varepsilon) d\varepsilon. \quad (9)$$

Given that establishments are homogeneous (except for their wage cyclicality), in steady state, they all have the same selection rate η . The selection rate over the business cycle depends on the wage formation mechanism.

5.1.2 Wage Formation

Our paper does not provide a theoretical foundation for different wage cyclicality. In reality, they may be driven by different labor market institutions or price setting behavior. However, our dataset does not allow us to isolate the driving forces. We believe that it is reasonable to assume that establishments inherit their wage formation mechanisms from the past (e.g., due to the degree of unionization or the culture of the establishment).²⁸ Therefore, we treat the wage cyclicality over the business cycle as exogenous in our model. We take different wage cyclicality as given, which we change in our counterfactual exercises.

In spirit of Blanchard and Galí (2007), we choose a simple wage formation mechanism to model different wage cyclicality:

$$w_{it} = \kappa_i (a_t w^{norm}) + (1 - \kappa_i) w^{norm}, \quad (10)$$

²⁸Knoppik and Beissinger (2009) show for 12 EU countries (including Germany) that the variation in national degrees of downward nominal wage rigidity cannot convincingly be explained by institutional factors such as, e.g., union density or bargaining coverage.

580 where κ_i is the establishment-specific degree of wage cyclicality over the business cycle and w^{norm} is the wage norm, where the economy converges to in the long run. Note that in our calibration, we will set w^{norm} to the steady state level of a Nash bargaining solution (such that the wage fluctuates around this reference point, which is bilaterally efficient). Thus, all establishments have the same wage in steady state. An establishment with $\kappa_i = 1$ comoves
 585 one to one with aggregate productivity, i.e., it is strongly procyclical. By contrast, for $\kappa_i < 0$, the establishment shows a countercyclical real wage behavior.

Note that the wage in group i is the same for all workers (i.e., $w_{it} = w_{it}^E = w_{it}^I$). The same wage for all workers can also be rationalized based on bargaining if training costs are sunk (as, e.g., assumed by Pissarides, 2009).

590 5.1.3 Aggregation

In order to establish an equilibrium, we have to aggregate across all establishments. The aggregate selection rate is

$$\eta_t = \frac{\sum_{i=1}^E c_{it} \eta(\tilde{\varepsilon}_{it})}{\sum_{i=1}^E c_{it}}, \quad (11)$$

where E is the number of establishments. The aggregate employment rate is

$$n_t = (1 - \phi) n_{t-1} + s_t c_t \eta_t, \quad (12)$$

where the second term on the right hand side denotes the number of new matches, namely all
 595 workers who were searching for a job (s_t), who got in contact (c_t) with an establishment and who got selected (η_t). The aggregated contact rate is simply the sum of all establishment-specific contact rates,²⁹ $c_t = \sum_{i=1}^E c_{it}$.

All workers who search for a job and who are unable to match are defined as unemployed.

$$u_t = s_t (1 - c_t \eta_t), \quad (13)$$

600 i.e., those who lost their job exogenously in period t and those searching workers who did not find a job in the previous period.

In addition, unemployed workers and employed workers add up to 1:

$$n_t = 1 - u_t. \quad (14)$$

We assume that each searching worker gets in contact with one establishment in each period, i.e., there is a degenerate contact function where the overall number of contacts is

²⁹We assume that there cannot be more than one contact per worker and per period.

605 equal to the number of searching workers. This means that in aggregate the probability of a worker to get in contact with an establishment is 1 ($\sum_{i=1}^E c_{it} = 1$).

Note that we will choose five establishment types in our simulation below and we will assign exogenous contact rates according to their average empirical size. The establishment type will be our disaggregation level because all establishments of the same type behave in
610 the same way.

Aggregate output in the economy is aggregate productivity multiplied with aggregate employment minus the average training costs:

$$y_t = a_t n_t - \sum_{i=1}^E \left(c_{it} \eta(\tilde{\varepsilon}_{it}) s_t \left(\frac{H_{it}}{\eta(\tilde{\varepsilon}_{it})} + h \right) \right). \quad (15)$$

5.2 Calibration

5.2.1 Parameter Values

615 In order to analyze the effects of different wage cyclicalities at the establishment level, we parametrize and simulate the model. Due to the quarterly frequency of our simulation, we set the discount factor to $\delta = 0.99$. In line with the average quarterly flow rates from the AWFPP, the exogenous quarterly separation rate is set to $\phi = 0.07$ (see Bachmann et al., 2021, for quarterly statistics).

620 Aggregate productivity is normalized to 1. We assume that productivity is subject to aggregate shocks, with a first-order autoregressive process. The aggregate productivity shock is drawn from a normal distribution with mean zero. The first-order autocorrelation coefficient is set to 0.8. The standard deviation of the shock is normalized to 0.01.

We assume that the w^{norm} is equal to the steady state value of Nash bargaining with
625 bargaining power 0.5 (see Appendix A.8.2 for the analytical derivation of this reference point) and a value of unemployment benefits of 0.65. Under this parametrization, we obtain a steady state wage of 0.95.

In order to target the distribution of wage cyclicalities from the data, we discretize our model economy into five different wage cyclical groups. As establishments in different
630 quintiles of our distribution have different sizes (see Figure A.6 in the Appendix for details), we assume different exogenous contact rates for each group, namely $c_i = [0.14, 0.21, 0.27, 0.23, 0.15]$.³⁰

In order to obtain comparability with the standard search and matching model, following

³⁰The alternative would be to assume different productivities and thereby different endogenous selection rates. However, Figure A.6 shows that wage levels in these different quintiles are very similar. Therefore, we abstain from this solution.

Merkel and van Rens (2019), we use an inverse Pareto distribution for the idiosyncratic training cost distribution (see Appendix A.11 for the equivalence proof). In line with Kohlbrecher et al. (2016) and other matching function estimations, we set the elasticity of the underlying matching function with respect to unemployment to $\gamma = 0.65$.

We target the steady state selection rate to 0.45 to obtain the average unemployment rate from 1979–2014 (0.08). To reach this target, we set the fixed ex-post hiring costs to $hc = -0.22$ (the sum of fixed and average idiosyncratic training costs is 0.06 in steady state). In order to target the estimated effects of wage cyclicalities on employment cyclicalities ($\hat{\gamma}_1 = -0.46$), we set the distributional parameter for the cumulative distribution function $\eta_t = \left(\frac{\hat{\varepsilon}_t}{\chi}\right)^{\frac{1-\psi}{\psi}}$ to $\chi = 3.58$. As our estimation is performed based on annual data, we explain in Appendix A.10 how we do the aggregation from quarterly simulated to annual data to ensure comparability. The next subsection contains a detailed discussion of how the micro estimation affects the macroeconomic outcomes.

To determine the wage cyclicity parameters κ_i , we match the 10th, 30th, 50th, 70th, and 90th percentile from Table A.2, by setting $\kappa_i = [-0.26, -0.02, 0.08, 0.18, 0.39]$. Under our chosen calibration, we do not hit the bargaining bounds in any of the simulations (i.e., neither workers nor establishments have an incentive to end the employment relationship). Thus, our model does not run afoul of the Barro (1977) Critique.

5.2.2 Connection between Micro Estimation and Macro Simulation

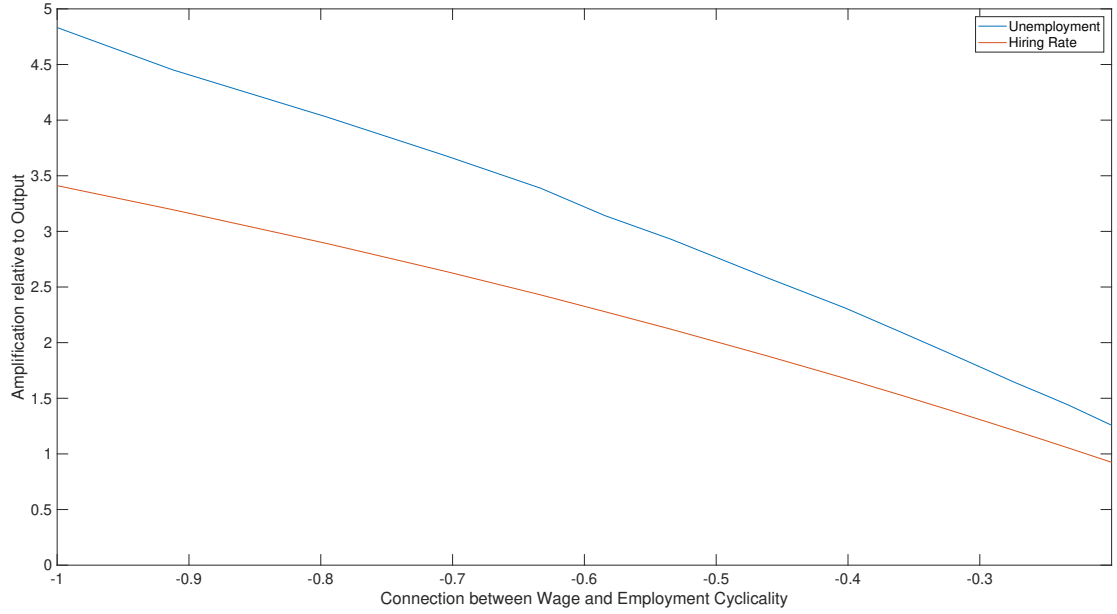
In our calibration strategy, we have chosen the parameter χ of the inverse Pareto distribution such that we obtain $\hat{\gamma}_1 = -0.46$ from simulated data. This choice matters for the quantitative performance of the model.

Intuitively, a less dispersed distribution leads to a stronger reaction in response to establishment-level and aggregate changes. Why? A less dispersed distribution means that there is more density mass around the cutoff point. Thereby, a given change in the cutoff point leads to a relatively large change in the selection rate and thereby labor adjustment.

Thus, the larger $\hat{\gamma}_1$ in our empirical micro-estimations, the less dispersed will be the distribution and the more mass will be around the cutoff point. This will lead to a more pronounced reaction of the model economy to aggregate shocks (and thereby more amplification). Figure 6 shows different targeted $\hat{\gamma}_1$ (in a range from -1.0 to -0.2, with the same targeted steady state) on the horizontal axis and the relative standard deviation of the hiring rate and unemployment relative to output on vertical axis: Larger $\hat{\gamma}_1$ leads to more amplification.

In different words, the results from our micro estimations are decisive for how strongly

Figure 6: Connection between Microeconomic Estimate and Macroeconomic Amplification



Note: The horizontal axis shows different targets for $\hat{\gamma}_1$. The vertical axis shows the amplification of the hiring rate and unemployment relative to output.

our model economy reacts to aggregate shocks. In combination with the estimated wage cyclicalities, this pins down the aggregate role of wage cyclicalities in counterfactual exercises.

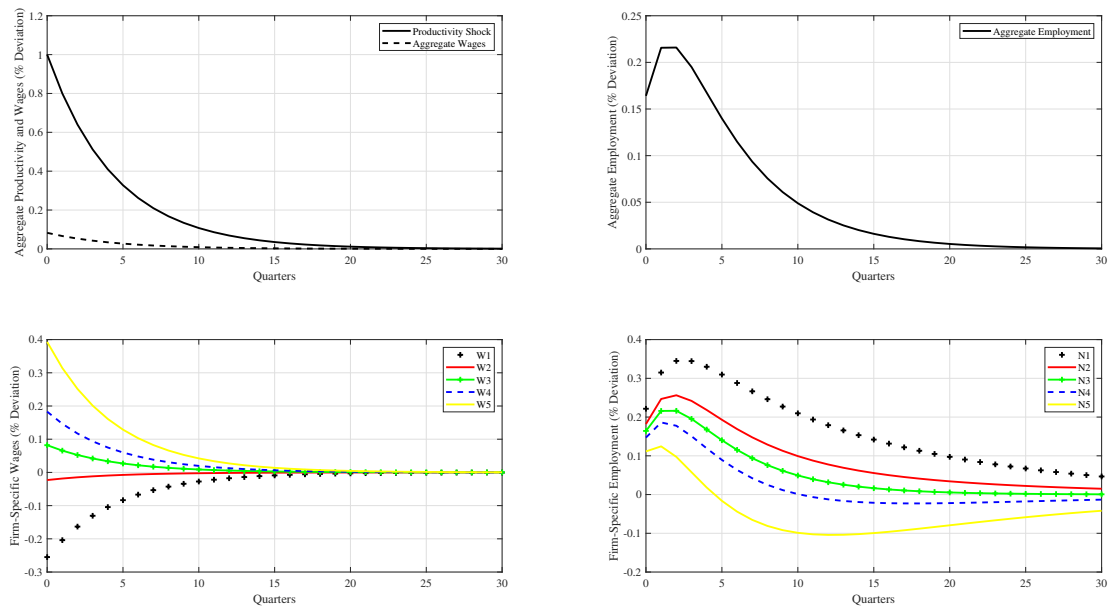
670 Thereby, our quantitative exercise is different from many other counterfactual exercises in the literature. We bind our hands based on our rich microeconomic results.

5.3 Model Performance

Figure 7 shows the impulse response functions of the model economy in reaction to a positive aggregate productivity shock. In aggregate, average wages and employment respond
675 procyclically to the aggregate productivity shock (see upper two panels). However, establishments react very differently to the aggregate productivity shock depending on their wage cyclicity group (see lower two panels). Real wages at the most countercyclical wage group (denoted by W1) decline, while they increase at the most procyclical wage group (denoted by W5). Employment shows a flip-sided behavior. It increases for the most countercyclical
680 wage group (denoted by N1), while it falls (after some quarters) for the most procyclical wage group (denoted by N5).

In our model, both the most countercyclical and the most procyclical establishments show a larger volatility of real wages than establishments in the middle of the distribution.

Figure 7: Impulse Response Functions to a Positive Aggregate Productivity Shock



Note: The figure shows aggregate (upper two panels) and group-specific (lower two panels) reactions to a positive aggregate productivity shock. The most countercyclical wage group is denoted with a 1, the most procyclical wage group is denoted with a 5.

Although we did not target this U-shape of wage volatilities, this pattern can also be found
 685 in the data (results are available on request). Therefore, it is important that our measure of
 wage cyclicalities from Equation (1) takes into account the direction of the wage movement.
 A measure of wage cyclicalities based on the wage volatility would be misleading.

Why does employment increase in the immediate aftermath of the shock for the most
 procyclical wage group, but decrease later on? Under our chosen calibration strategy, the
 690 net present value of a job also increases for the most procyclical wage group in response to a
 positive productivity shock. In other words, the productivity increase is larger than the wage
 increase. Thus, even the most procyclical establishments have an incentive to increase their
 selection rate (i.e., the share of applicants they choose). See Equations (8) and (9) for details.
 However, the new present values (and thereby the selection rate) increase more for the most
 695 countercyclical establishments. As aggregate employment increases due to the aggregate
 shock, the pool of available searching workers and thereby the number of applicants per
 establishment declines. After some quarters, this effect dominates for the most procyclical
 wage establishments. Despite a slightly larger selection rate, the equilibrium effects (i.e. less
 searching workers) dominate for procyclical establishments.

Before we use the model for counterfactual exercises, we look at its aggregate performance.
 700 Table 10 shows the standard deviations of the aggregate hiring rate (hr),³¹ employment rate
 (n), and unemployment rate (u) relative to the standard deviation of real GDP, both in data
 and model simulations. For equivalent empirical statistics based on different filters and time
 frequencies, see Appendix A.10.2. The hiring rate and unemployment are more volatile than
 705 aggregate GDP. Thus, our model amplifies aggregate productivity shocks. For the hiring
 rate and unemployment, the model generates about one-half of the aggregate volatility from
 the data. For employment, there is a somewhat larger gap between the volatility in the data
 and the simulation. This larger gap may be related to worker churn (see Bachmann et al.
 (2021)), which we do not model in our theoretical framework and which may increase the
 710 volatility of employment in the data.

Keep in mind that we have not targeted aggregate labor market amplification in our
 calibrated model. Instead, we have targeted the heterogeneities of wage cyclicalities and the
 effect of different wage cyclicalities on employment cyclicalities (and thereby disciplined the
 parametrization of the idiosyncratic shock dispersion).

Moreover, we have simulated our model using only aggregate productivity shocks. In
 715 reality, other aggregate shocks also play a role and thereby potentially create additional
 labor market amplification. Against this background, our simulated model does a remarkably

³¹The establishment-specific hiring rate is defined as the number of matches divided by the average number
 of employed in this and the previous quarter.

good job by replicating about one-half of the observed amplification for the hiring rate and unemployment.

Table 10: Standard Deviations of Hiring Rate, Number of Full-Time Employment (both Aggregated from the AWFP and Deseasonalized with X-12-ARIMA) and Unemployment Rate (all Relative to Real GDP)

	hr	n	u
Data	3.84	0.88	5.05
Simulation	1.88	0.22	2.58

Note: Observation period is 1979–2014. All variables are expressed in logs and as deviations from the Hodrick-Prescott filter (with smoothing parameter 1600).

720 Table 11 shows that our model generates the right signs for the correlations between various aggregate variables. For most variables, we do not only obtain the right sign, but also the right quantitative dimension. The absolute value of the correlation between (un)employment and GDP is larger in the model simulation than in the data. This is unsurprising given that productivity is the only aggregate shock in our model.

Table 11: Correlations between Hiring Rate, Number of Full-Time Employment (both Aggregated from the AWFP), and Unemployment Rate

	corr(hr,n)	corr(hr,GDP)	corr(n,GDP)	corr(hr,u)	corr(u,GDP)
Data	0.33	0.56	0.59	-0.52	-0.57
Simulation	0.32	0.64	0.93	-0.32	-0.93

Note: All variables are expressed in logs and as deviations from the Hodrick-Prescott filter (with smoothing parameter 1600).

725 Overall, our model generates realistic aggregate labor market amplification and it replicates the sign of important correlations from the data. This puts us in a position to use our model for counterfactual exercises.

5.4 Counterfactual Exercises

730 While the qualitative effects of different wage cyclicalities in search and matching models are well understood (e.g., Hall, 2005; Shimer, 2005; Hall and Milgrom, 2008), our paper adds a new quantitative contribution to the literature. We have proposed a selection model that allows for heterogeneous wage cyclicalities in the cross section. Remember that this model in its homogeneous version is calibrated to generate observationally equivalent job-finding rate and unemployment dynamics to the search and matching model (see Appendix

735 A.11 and (Merkl and van Rens, 2019)).³² In Appendix A.9, we show that the search and matching model with decreasing returns to labor would not be able to match the empirical facts from our estimations. Therefore, our model framework offers a natural way for the quantitative analysis (ability to calibrate facts from data and at the same time equivalence with search and matching in its homogeneous version). This puts us in a position to perform
740 counterfactual exercises that are disciplined by our rich micro data moments.

In a first counterfactual exercise, we set the wage cyclicality parameter for all establishments equal to one of the intermediate group (namely, $\kappa_i = 0.08$ for $i = [1,5]$). In this scenario, the standard deviations of the hiring rate and unemployment barely change relative to the baseline scenario. The intuition is straightforward: If all establishments behaved
745 like the median establishment, one half of establishments would be less procyclical than in the baseline and the other half would be more procyclical than in the baseline. These two effects basically cancel out, as wage cyclicalitys are pretty symmetric around the median (see Table 2). As can be seen in Table 12, the aggregate age dynamics is basically unaffected by this counterfactual exercise. However, this does not mean that heterogeneities of
750 wage cyclicalitys do not matter. Why? First, Table 12 only analyzes the average cyclicality of aggregate variables. Analogous to Krusell and Smith (1998) these heterogeneities leave aggregate dynamics relatively unaffected. However, as Figure 7 shows, the heterogeneous version of the model generates substantial dispersion of wages and employment around the median establishment. This would definitely matter for welfare in a fully fledged hetero-
755 geneous agent model without perfect insurance. Second, as we show next, it matters for aggregate dynamics how these heterogeneous wage cyclicalitys are switched off.

Table 12: Counterfactual Exercises

	Calibrated baseline	All intermediate group	All most procyclical group	All Nash Bargaining
Hiring rate	1.88	1.88	1.33	0.58
Employment	0.22	0.22	0.15	0.07
Unemployment	2.58	2.58	1.81	0.78
Wages	0.08	0.08	0.39	0.78

Note: The table shows the standard deviation of the logarithm of simulated the unemployment, the hiring rate and employment relative to the standard deviation of output (all HP filtered).

When we set the wage cyclicality of all groups to the most procyclical wage group (namely, $\kappa_i = 0.39$ for $i = [1,5]$), labor market amplification is reduced by roughly 30 percent (see

³²The standard search and matching model with constant returns to scale would not be able to replicate the empirical feature that establishments have heterogeneous wage cyclicalitys and hire in (almost) any period. In this case, only one marginal establishment type would be hiring. All others would switch off their hiring margin.

Table 12). In other words, if all establishments had a wage cyclicality as the establishment at
760 the 90th percentile of the distribution, the labor market would react much less to aggregate
shocks. Thus, it matters that a substantial fraction of establishments has acyclical or even
countercyclical wages. This sort of heterogeneity amplifies the response of the labor market
to aggregate shocks.

Third, we assume that all five groups follow standard Nash bargaining. In this scenario,
765 the amplification of unemployment drops by around two-thirds relative to the baseline sce-
nario. Under Nash bargaining, wages are a lot more procyclical than observed for nearly
all establishments in Germany. Wages co-move very strongly with aggregate productivity in
this scenario, i.e., the incentives for establishments to create extra jobs in a boom are much
smaller than in the baseline scenario. This exercise directly addresses the Shimer (2005)
770 puzzle. It shows that the observed wage cyclicality in the German labor market lead to a
labor market response that is three times larger than under standard Nash bargaining.

Overall, our counterfactual exercises point to powerful effects of different wage cyclicalities for aggregate labor market fluctuations. The qualitative connection between wage
cyclicality and employment cyclicality is well established in the existing theoretical liter-
775 ature. The novel contribution of our paper is of quantitative nature, as we have targeted
the connection between wage cyclicality and employment cyclicality, which we estimated
from German establishment data. One key parameter for labor market amplification is the
standard deviation of the training cost distribution, which we have disciplined by the quan-
titative connection between wage and employment cyclicality (see Section 5.2.2). We have
780 shown that if all establishments behaved like the most procyclical wage establishments or
followed Nash bargaining, the labor market would react by 30 percent and two-thirds less to
aggregate shocks, respectively.

6 Conclusion

Using the Administrative Wage and Labor Market Flow Panel (AWFP), we show that the
785 average real wage behavior masks that establishments have very different wage cyclicality.
Around 34 percent of establishments have a countercyclical wage over the business cycle.
Due to the linkage of the AWFP with the IAB Establishment Panel, we are able to show
that moderate cyclicality is associated with a higher share of establishments within collective
bargaining. In addition, moderately procyclical establishments are on average larger relative
790 to all other groups. In addition, strongly countercyclical wage establishments tend to have
a larger average real wage growth than the average in the economy.

Furthermore, we are able to show that differences in real wage cyclicality have meaning-

ful implications for employment cyclicalities. Establishments with more procyclical wages have a less procyclical employment behavior. This is in line with our proposed theoretical framework. In counterfactual exercises, we show the quantitative importance of wage rigidities for aggregate amplification. Compared to standard Nash wage bargaining, the German labor market reacts three times stronger to aggregate shocks.

By showing that establishments' wage rigidity does affect their employment dynamics, our paper provides support for quantitative theories where different wage cyclicalities affect employment. Our paper looks at the effects of wage cyclicalities through the lens of a model with random search. Thereby, we present one possible mechanism that is in line with the pattern from the data. However, we consider our paper as a starting point that establishes empirical facts, which are relevant for various other streams of the literature. Our wage cyclicalities measures are not structural but in a reduced form and can easily be compared to other simulated models, e.g., directed search models (e.g., Julien et al., 2009), New Keynesian frameworks with infrequent wage adjustments, or to medium-scale dynamic stochastic general equilibrium models (e.g., Christiano et al., 2005; Smets and Wouters, 2007).

References

- Addison, J.T., Teixeira, P., Zwick, T., 2010. German works councils and the anatomy of wages. *Industrial and Labor Relations Review* 63, 247–270.
- Bachmann, R., Bayer, C., Merkl, C., Seth, S., Stüber, H., Wellschmied, F., 2021. Worker churn in the cross section and over time: New evidence from Germany. *Journal of Monetary Economics* 117. 781–797.
- Barnichon, R., Figura, A., 2015. Labor market heterogeneity and the aggregate matching function. *American Economic Journal: Macroeconomics* 7, 222–249.
- Barro, R.J., 1977. Long-term contracting, sticky prices, and monetary policy. *Journal of Monetary Economics* 3, 305–316.
- Basu, S., House, C., 2016. Allocative and remitted wages: New facts and challenges for keynesian models. *Handbook of Macroeconomics* 2, 297–354.
- Beaudry, P., DiNardo, J., 1991. The effect of implicit contracts on the movement of wages over the business cycle: Evidence from micro data. *Journal of Political Economy* 99, 665–688.

Bils, M.J., 1985. Real wages over the business cycle: Evidence from panel data. *Journal of Political Economy* 93, 666–689.

825 Blanchard, O., Fischer, S., 1989. *Lectures on Macroeconomics*. MIT Press, Cambridge.

Blanchard, O., Galí, J., 2007. Real wage rigidities and the new keynesian model. *Journal of Money, Credit, and Banking* 39, 35–65.

Brixy, U., Kohaut, S., Schnabel, C., 2006. How fast do newly founded firms mature? Empirical analyses on job quality in start-ups, in: Fritsch, M., Schmude, J. (Eds.), *Entrepreneurship in the region*. New York, pp. 95–112.

830 Burda, M., Hunt, J., 2011. What explains the German labor market miracle in the Great Recession. *Brookings Papers on Economic Activity* 42, 273–335.

Card, D., Heining, J., Kline, P., 2015. CHK effects. *FDZ-Methodenreport* 06/2015 (en).

Carlsson, M., Westermarck, A., 2022. Endogenous separations, wage rigidities, and unemployment volatility. *American Economic Journal: Macroeconomics* 14, 332–354.

835 Carneiro, A., Guimarães, P., Portugal, P., 2012. Real wages and the business cycle: Accounting for worker, firm, and job title heterogeneity. *American Economic Journal: Macroeconomics* 4, 133–152.

Christiano, L., Eichenbaum, M., Evans, C., 2005. Nominal rigidities and the dynamic effects of a shock to monetary policy. *Journal of Political Economy* 113, 1–45.

840 Christiano, L., Eichenbaum, M., Trabandt, M., 2021. Why is unemployment so countercyclical? *Review of Economic Dynamics* 41, 4–37.

Chugh, S., Merkl, C., 2016. Efficiency and labor market dynamics in a model of labor selection. *International Economic Review* 5, 1371–1404.

845 Correia, S., 2018. REGHDFE: Stata module to perform linear or instrumental-variable regression absorbing any number of high-dimensional fixed effects. Technical Report. Statistical Software Components S457874, Boston College Department of Economics. Revised 17. Sept. 2018.

Ehrlich, G., Montes, J., 2020. Wage rigidity and employment outcomes: evidence from administrative data. University of Michigan, mimeo.

850 Ellguth, P., Kohaut, S., Möller, I., 2014. The IAB Establishment Panel — methodological essentials and data quality. *Journal for Labour Market Research* 47, 27–41.

Elsby, M., Solon, G., 2019. How prevalent is downward rigidity in nominal wages? International evidence from payroll records and pay slips. *Journal of Economic Perspectives* 33, 185–201.

855

Fackler, D., Fuchs, M., Hölscher, L., Schnabel, C., 2019. Do startups provide employment opportunities for disadvantaged workers? *Industrial and Labor Relations Review* 72, 1123–1148.

Gertler, M., Huckfeldt, C., Trigari, A., 2020. Unemployment fluctuations, match quality, and the wage cyclicalities of new hires. *The Review of Economic Studies* 87, 1876–1914.

860

Grigsby, J., Hurst, E., Yildirmaz, A., 2021. Aggregate nominal wage adjustments: New evidence from administrative payroll data. *American Economic Review* 111, 428–471.

Haefke, C., Sonntag, M., van Rens, T., 2013. Wage rigidity and job creation. *Journal of Monetary Economics* 60, 887–899.

Hall, R.E., 2005. Employment fluctuations with equilibrium wage stickiness. *American Economic Review* 95, 50–65.

865

Hall, R.E., Milgrom, P.R., 2008. The limited influence of unemployment on the wage bargain. *American Economic Review* 98, 1653–1674.

Julien, B., Kennes, J., King, I., Mangin, S., 2009. Directed search, unemployment and public policy. *Canadian Journal of Economics* 42, 956–983.

870

Knoppik, C., Beissinger, T., 2009. Downward nominal wage rigidity in Europe: An analysis of european micro data from the ECHP 1994–2001. *Empirical Economics* 36, 321–338.

Kohlbrecher, B., Merkl, C., Nordmeier, D., 2016. Revisiting the matching function. *Journal of Economic Dynamics and Control* 69, 350–371.

Krusell, P., Smith, Jr., A.A., 1998. Income and wealth heterogeneity in the macroeconomy. *Journal of Political Economy* 106, 867–896.

875

Kudlyak, M., 2014. The cyclicalities of the user cost of labor. *Journal of Monetary Economics* 68, 53–67.

Kurmann, A., McEntarfer, E., 2019. Downward wage rigidity in the United States: New evidence from worker-firm linked data. *Drexel University School of Economics Working Paper Series* 2019-01.

880

- Lebow, D.E., Saks, R.E., Wilson, B.A., 1999. Downward nominal wage rigidity: Evidence from the Employment Cost Index. The Federal Reserve Board, Finance and Economics Discussion Series 1999-31.
- 885 Mankiw, N.G., 1989. Real business cycles: A new keynesian perspective. *Journal of Economic Perspectives* 3, 79–90.
- Martins, P.S., Solon, G., Thomas, J.P., 2012. Measuring what employers do about entry wages over the business cycle: A new approach. *American Economic Journal: Macroeconomics* 4, 36–55.
- 890 Merkl, C., van Rens, T., 2019. Selective hiring and welfare analysis in labor market models. *Labour Economics* 57, 117–130.
- Merkl, C., Wesselbaum, D., 2011. Extensive versus intensive margin in Germany and the United States: Any differences? *Applied Economics Letters* 18, 805–808.
- Pissarides, C., 2009. The unemployment volatility puzzle: Is wage stickiness the answer?
895 *Econometrica* 77, 1339–1369.
- Schaefer, D., Singleton, C., 2019. Cyclical labor costs within jobs. *European Economic Review* 120, 103317.
- Shimer, R., 2005. The cyclical behavior of equilibrium unemployment and vacancies. *American Economic Review* 95, 25–49.
- 900 Smets, F., Wouters, R., 2007. Shocks and frictions in the US business cycle: A bayesian DSGE approach. *American Economic Review* 97, 586–606.
- Solon, G., Barsky, R., Parker, J.A., 1994. Measuring the cyclicalities of real wages: How important is composition bias? *The Quarterly Journal of Economics* 109, 1–25.
- Stüber, H., 2017. The real wage cyclicalities of newly hired and incumbent workers in Germany.
905 *The Economic Journal* 127, 522–546.
- Stüber, H., Seth, S., 2018. The Administrative Wage and Labor Market Flow Panel. FAU Discussion Papers in Economics 01/2017 (updated December 2018).

Acknowledgments

The authors are grateful for feedback at seminars in Essen, Nuremberg, Hohenheim, and at the ETH Zürich, the T2M workshop in Lisboa, the 4th workshop in Macroeconomics in Marrakech, the 2017 Annual Conference of the VfS, the 23rd Annual Meeting of the SOLE, the 2018 Annual Conference of the SES, the IZA World Labor Conference, the European Midwest Micro/Macro Conference (EM3C), and the Mannheim DFG-workshop “Macroeconomics and the Labor Market.” We thank Michael Graber, Christian Haefke, Matthias Hertweck, Sven Schreiber, and Nikolai Stähler for discussing our paper. In addition, we are grateful for comments from Britta Gehrke, Brigitte Hochmuth, Britta Kohlbrecher, Ben Lochner, Manuel Meisenecker, Andy Snell, and Jonathan Thomas.

The authors gratefully acknowledge financial support from the German Research Foundation (DFG) under the priority program “The German Labor Market in a Globalized World” (SPP 1764, grants: ME 3887/3-1, ME 3887/3-2, STU 627/1-1 and STU 627/1-2) and the Hans-Frisch-Stiftung.

A Appendix for Online Publication

A.1 Datasets

A.1.1 The Administrative Wage and Labor Market Flow Panel

The Administrative Wage and Labor Market Flow Panel (AWFP) aggregates German administrative wage, labor market flow, and stock information to the establishment level for the years 1975–2014. All data are available at an annual and quarterly frequency (see Stüber and Seth, 2018, 2019).

The underlying administrative microeconomic data source is mainly the Employment History (Beschäftigtenhistorik, BeH) of the Institute for Employment Research (IAB). The BeH comprises all individuals who were at least once employed subject to social security since 1975.³³ Some data packages — concerning flows from or into unemployment — use additional data from the Benefit Recipient History (Leistungsempfängerhistorik, LeH). The LeH comprises, inter alia, all individuals that receive benefits in accordance with Social Code Book III (recorded from 1975 onwards). Before aggregating the data to the establishment level, several corrections and imputations were conducted at the micro level.

For coherency, we focus on wages and flows for “regular workers”. In the AWFP a person is defined as a “regular worker” when he/she is full-time employed and belongs to person group 101 (employee s.t. social security without special features), 140 (seamen) or 143 (maritime pilots) in the BeH. Therefore, all (marginal) part-time employees, employees in partial retirement, interns etc. are not accounted for as regular workers.

Wages are defined as the mean real daily wages (in 2010 prices) of all employed full-time (regular) workers in a particular establishment.³⁴ The daily wages include the base salary, all bonuses and special payments (such as performance bonuses, holiday pay, or Christmas allowance), fringe benefits, and other monetary compensations received throughout the year (or the duration of the employment spell). Therefore, the daily wages correspond more to a measure of total compensation than to a daily base wage. Workers’ daily wages above the contribution assessment ceiling are imputed following Card et al. (2015) before aggregating the data to the establishment level.³⁵

In the AWFP, stocks and flows are calculated using an “end-of-period” definition:

- The stock of employees of an establishment in year t equals the number of full-time workers on the last day of year t .

³³The BeH also comprises marginal part-time workers employed since 1999.

³⁴Deflated using the CPI.

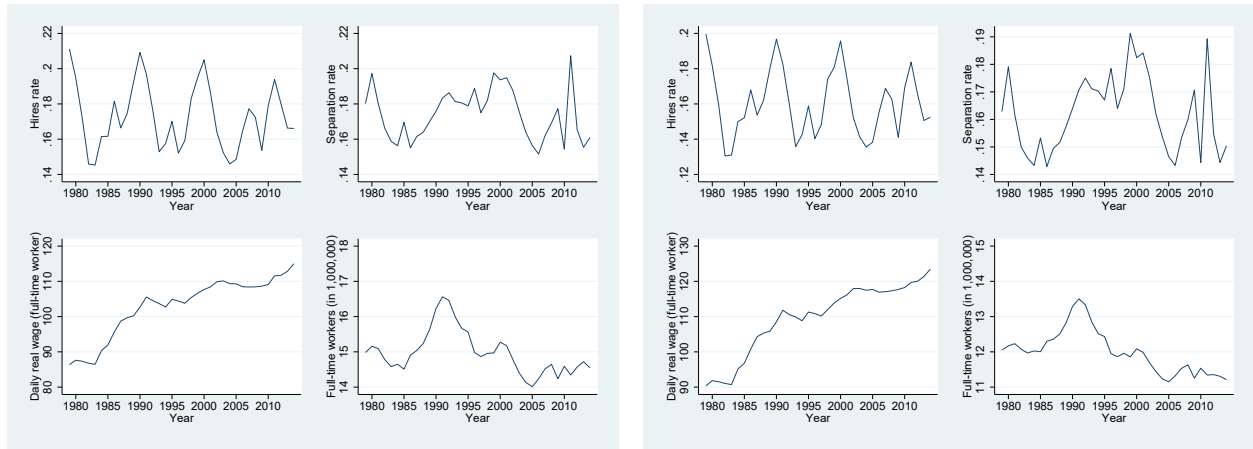
³⁵For details see Appendix 8.2 of Schmucker et al. (2016).

- Inflows of employees into an establishment for year t equal the number of full-time workers who were regularly employed on the last day of year t but not so on the last day of the preceding year, $t-1$.
- Outflows of employees from an establishment for year t equal the number of full-time workers who were regularly employed on the last day of the preceding year ($t-1$) but not so on the last day of year t .

For more detailed information on the AWFP please refer to Stüber and Seth (2018).

We use the AWFP at the annual frequency and restrict the data to West German establishments (excluding Berlin) and the years 1979–2014. The dataset contains more than 3.3 million establishments. For illustration purposes Figure A.1.1 shows the time series for the aggregated hiring rate, separation rate, mean daily real wage per full-time worker (in 2010 prices), and the number of full-time workers. Hires (separation) rate is calculated as the sum of all hires (separations) divided by the average number of full-time workers in t and $t-1$.

Figure A.1: Aggregated time series for West Germany



A.1.1: AWFP

A.1.1: Baseline sample

Note: West Germany (excluding Berlin), 1979–2014.

Baseline sample restrictions: Only establishments with on average at least ten full-time workers are included. Further, the establishment must be observed at least five times.

For our baseline sample we restrict the AWFP data as follows. We consider only establishments with on average at least ten full-time workers. Further we only keep establishments for which we have at least five observations.³⁶ It covers on average 80.2% of all full-time workers. Over the years 1979–2014 the share varies between 76.8% and 82.7%. In Section 2.2 we motivate our baseline selection criteria in detail. Analog to illustration Figure A.1.1,

³⁶Since we analyze wage growth and employment growth, this means that we need to observe the establishments for at least six years in the AWFP.

Figure A.1.2 shows the time series for our baseline sample. Some descriptive statistics for the baseline sample are presented in Table A.1. In Appendix A.5, we present some statistics for pro- and countercyclical establishments ($\hat{\alpha}_{1i} > 0$ and $\hat{\alpha}_{1i} < 0$, respectively) as well as for strongly countercyclical ($\hat{\alpha}_{1i} \leq 20\text{th percentile}$), strongly procyclical establishments ($\hat{\alpha}_{1i} \leq 80\text{th percentile}$), and acyclical and moderately cyclical establishments ($20\text{th percentile} < \hat{\alpha}_{1i} < 80\text{th percentile}$).

Table A.1: Descriptive Statistics Baseline Sample (I)

Variable	Mean	Std. Dev.
Establishment size	52.06	233.50
log(daily wage)	4.64	0.30
Low-skilled workers	14.30%	14.17
Medium-skilled workers	73.42%	17.75
High-skilled workers	12.27%	15.92
Male workers	70.64%	23.30
Mean tenure	23.95	9.88
Mean age	39.69	3.63

Note: This table shows descriptive statistics for the baseline sample. Before calculating the statistics, extreme outliers are removed (see footnote 12). Results are based on a sample of 344,537 establishments. For these establishments, we have 7,157,705 establishment-year observations, considering 427,008,993 person-year observations. The sample thus covers 18% of all establishment-year observations and over 79% of all person-year observations. Statistics weighted by mean establishment size.

A.1.2 The IAB Establishment Panel

The IAB Establishment Panel is an annual survey of establishments located in Germany which has been conducted since 1993 (Fischer et al., 2009; Ellguth et al., 2014) and it can be linked to the AWFP (see Stüber et al., 2020). The survey information is collected mostly in face-to-face interviews. The survey aims for a representative sample of about 15,000 to 16,000 establishments each year.

The IAB Establishment Panel contains information on the establishments which is not available in the administrative data which is used to generate the AWFP. It covers various topics such as the business performance and strategies, investment and innovation activities, vocational/further training, recruitment and layoff behaviour, working time issues and structural information (e.g., works councils, collective agreements, ownership structure) among others.

The sampling frame of the IAB Establishment Panel comprises all establishments in

Germany with at least one employee who is fully liable to social security on June 30th of the previous year. Establishments that exclusively have workers in marginal part-time employment are excluded from the sampling frame. The survey sample is disproportionately stratified in three dimensions: First, the sample is stratified by 16 federal states. Second, the survey sample is stratified by ten establishment size classes as the population is very much skewed towards small establishments. Third, the survey sample is stratified by industries to allow for differentiated analyses in this respect.

A.2 Average Wage Cyclicity

Our regression equation for quantifying the average cyclicity of mean real daily wage growth at the establishment level is

$$\Delta \ln w_{ijt} = \alpha_0 + \alpha_1 \Delta \ln N_t^j + \alpha_2 t + \alpha_3 t^2 + \alpha_4' \mathbf{C}_{it} + \mu_i + \varepsilon_{ijt}, \quad (\text{A.1})$$

where $\Delta \ln w_{ijt}$ is the growth rate of mean real daily wages of establishment i in (industry) sector j in year t and $\Delta \ln N_t^j$ is the growth rate of full-time workers in sector j . μ_i is the establishment-fixed effect, and \mathbf{C}_{it} is a vector of control variables including the changes of education shares and gender shares at the establishment level as well as changes in the average age, tenure, and tenure squared of the workers within the establishment. We include changes in these control variables instead of levels to better control for changes in the work force composition of the establishments. In addition, we include a linear and quadratic time trend.³⁷

As the business cycle indicator in our baseline specification, we use the aggregate employment growth rate at the industry level using 31 sectors (see Appendix A.4 for details). By using the sector level, we want to make sure that our results are not driven by heterogeneity between sectors, e.g., different exposures to the aggregate business cycle.

Table A.2 shows that the estimated coefficient $\hat{\alpha}_1$ for aggregate employment growth is positive and statistically significant. A 1% larger sectoral employment growth is associated with a 0.2% larger wage growth on average. This confirms results from earlier studies that the average wage growth is procyclical (e.g., Solon et al., 1994, for the United States or Stüber, 2017, for Germany).

Appendix A.3 shows that a regression in levels — using the aggregated unemployment rate as the business cycle indicator — delivers a result that is comparable with regressions

³⁷When we exclude the time trend from our regressions, both the heterogeneity of wage cyclicality and their impact on establishment-specific employment change very little. The same is true if we include year dummies instead of time trends.

Table A.2: Average Wage Cyclicalities

Estimated coefficient $\hat{\alpha}_1$	0.218***
Controls	Changes in education shares, gender share, mean age, mean tenure, and mean tenure ² . Establishment fixed effects, year, and year ²
R^2 within R^2	0.17 0.13
Observations	7,259,116

Note: *** indicates statistical significance at the 1 percent level. Weighted by establishment size.

results on the worker level (see also Section 4.3.2). This confirms that our establishment-level approach delivers similar results as the typical worker-level approach. Given that we are ultimately interested in the interaction between wage and employment cyclicalities, the establishment level is relevant, as this is where employment is determined.

A.3 Comparison with Worker Level Regressions

This Appendix shows that our establishment-level dataset generates a similar result to the existing literature on wage cyclicalities for Germany. There are two key differences from the existing literature. First, the papers use worker-level data. Second, generally they use level-regressions instead of difference equations.³⁸ For comparability reasons, we estimate the following regression using the AWFP data:

$$\ln w_{it} = \alpha_0 + \alpha_1 u_t + \alpha_2 t + \alpha_3 t^2 + \alpha_4' \mathbf{C}_{it} + \mu_i + \varepsilon_{it}, \quad (\text{A.2})$$

where w_{it} is the mean real daily wage of all full-time workers at establishment i in year t . u_t is the aggregate unemployment rate for West Germany. We include a linear and a quadratic time trend as well as establishment fixed effects, μ_i , to control for time-invariant heterogeneity. \mathbf{C} contains a vector of control variables, education shares at the establishment level, gender, the mean age of workers in the establishment, their mean tenure and squared mean tenure, and dummies for sectors and federal states. For comparability reasons with the existing literature, which is based on the worker level, we weight our regressions with the size of the establishment.

Our estimated coefficient, using the baseline sample (see Table A.3), is well in line with the results of Stüber (2017).³⁹ He estimates the sensitivity of $\ln(\text{real daily wages})$ to unemployment at the worker (and not the establishment) level and finds coefficients of -1.26 for

³⁸We have decided to estimate a first-difference equation because we are interested in the heterogeneity of wage cyclicalities and we want to prevent spurious results due to trends.

³⁹Using the entire AWFP instead of the baseline sample, yields a similar coefficient: -1.17^{***} .

all workers.⁴⁰

Table A.3: Weighted Wage Regression using the Baseline Sample

Estimated coefficient $\hat{\alpha}_1$	-1.16***
Controls	Education shares, gender share, mean age, mean tenure, mean tenure ² , establishment fix effects, sector dummies, federal state dummies, year, year ²
R^2 within R^2	0.95 0.62
Observations	7,259,116

Note: *** indicates statistical significance at the 1 percent level. Weighted by establishment size.

The coefficient estimated by Stüber (2017) for all workers is slightly larger than the coefficients in our regressions. This is in line with Solon et al. (1994), who argue that using aggregated time series data instead of longitudinal microeconomic data leads to an underestimation of wage cyclicalities due to a composition bias. Although they compare microeconomic data to highly aggregated data (e.g., on the national level), the argument also applies to our analysis, where we use numbers that are aggregated from the worker level to the establishment level.

⁴⁰Stüber (2017) estimates a coefficient for newly hired workers of -1.33. This means that the incremental effect is economically small in Germany.

A.4 Results for 31 Industry Sectors

Each establishment in Germany belongs to one of 31 (industry) sectors (see note under Table A.4) according to the German Classification of Economic Activities (edition 1993, WZ 93). At the sector level, between 38.2% and 77.6% of establishments in a given sector have procyclical wage movements (PWS; $\alpha_{1i} \geq 0$). The larger dispersion — compared to the baseline results — is mainly driven by some special sectors.⁴¹ Between 48.1% and 74.8% of establishments in a given sector have procyclical employment movements (PES; $\beta_{1i} \geq 0$). Here as well, the larger dispersion is mainly driven by some special sectors.⁴²

Although we have used the sector-specific employment growth rate as the business cycle indicator in our baseline regressions (see Section 4), the reaction may be different from sector to sector. In order to check this, we additionally run the regressions on the sectoral level. Table A.4 shows that the estimated coefficient is negative in most of the 31 industry sectors. As expected, there is some heterogeneity between the industry sectors.

We observe five sectors with positive coefficients: (3) mining and quarrying of energy producing materials, (10) manufacturing of coke, refined petroleum products and nuclear fuel, (16) manufacturing of electrical and optical equipment, (19) electricity, gas and water supply, (30) private households with an employed persons, (31) extra-territorial organizations and bodies. All these sectors have in common that they are either really small and/or very regulated as Sector (19), or they are very special sectors, such as the last two. Sector 16 stands out somewhat — but here the coefficient is not statistically significant. We also observe two very negative coefficients for sectors 2 and 4, but again the sectors are rather small.

⁴¹The lower values are sector 10 (manufacturing of coke, refined petroleum products and nuclear fuels) with 38.2%, sector 30 (private households with employed persons) with 42.6%, and sector 19 (electricity, gas and water supply) with 47.6% PWS. The upper values are sector 9 (manufacturing of pulp, paper and paper products; publishing and print) with 77.6%, 15 (manufacturing of machinery and equipment – not elsewhere classified) with 77.4%, sectors 20 (construction) with 77.1% PWS.

⁴²The lower values are sector 30 (private households with employed persons) with 48.1%, sector 7 (manufacturing of leather and leather product) with 57.2%, and sector 10 (manufacturing of coke, refined petroleum products and nuclear fuel) with 59.0% PES. The upper values are sector 15 (manufacturing of machinery and equipment – not elsewhere classified) with 74.8%, sector 16 (manufacturing of electrical and optical equipment) with 73.0%, and sector 24 (financial intermediation) with 72.4% PES.

Table A.4: Effect of Wage Cyclicalilty on Employment Cyclicalilty for Industry Sectors

Sector	1	2	3	4
Estimated coefficient $\hat{\gamma}_1$	-0.663***	-4.226*	0.581**	-1.931***
N	3,100	16	314	1,122
Sector	5	6	7	8
Estimated coefficient $\hat{\gamma}_1$	-0.500***	-0.965***	-1.091***	-0.150**
N	9,911	5,425	846	3,013
Sector	9	10	11	12
Estimated coefficient $\hat{\gamma}_1$	-0.444***	1.684***	-0.8207***	-0.286***
N	7,622	182	2,932	4,976
Sector	13	14	15	16
Estimated coefficient $\hat{\gamma}_1$	-0.708***	-0.082***	-0.168***	0.040
N	3,931	16,106	12,178	10,106
Sector	17	18	19	20
Estimated coefficient $\hat{\gamma}_1$	-0.141	-0.391***	0.061	-0.298***
N	2,305	4,676	2,551	41,254
Sector	21	22	23	24
Estimated coefficient $\hat{\gamma}_1$	-0.516***	-0.918***	-0.518***	-0.218***
N	70,288	10,257	24,847	10,291
Sector	25	26	27	28
Estimated coefficient $\hat{\gamma}_1$	-0.577***	-0.226***	-0.792***	-0.413***
N	45,144	13,013	5,699	21,254
Sector	29	30	31	all
Estimated coefficient $\hat{\gamma}_1$	-0.605***	0.100	0.348	-0.460***
N	10,742	84	324	344,537

Note: 1) Agriculture, hunting and forestry; 2) Fishing; 3) Mining and quarrying of energy producing materials; 4) Mining and quarrying, except of energy producing materials; 5) Manufacturing of food products, beverages, and tobacco; 6) Manufacturing of textiles and textile products; 7) Manufacturing of leather and leather products; 8) Manufacturing of wood and wood products; 9) Manufacturing of pulp, paper and paper products; publishing and print; 10) Manufacturing of coke, refined petroleum products and nuclear fuel; 11) Manufacturing of chemicals, chemical products and man-made fibers; 12) Manufacturing of rubber and plastic products; 13) Manufacturing of other non-metallic mineral products; 14) Manufacturing of basic metals and fabricated metal products; 15) Manufacturing of machinery and equipment (not elsewhere classified); 16) Manufacturing of electrical and optical equipment; 17) Manufacturing of transport equipment; 18) Manufacturing (not elsewhere classified); 19) Electricity, gas and water supply; 20) Construction; 21) Wholesale and retail; repair of motor vehicles, motorcycles and personal and household goods; 22) Hotels and restaurants; 23) Transport, storage, and communication; 24) Financial intermediation; 25) Real estate, renting, and business activities; 26) Public administration and defense; compulsory social security ; 27) Education; 28) Health and social work; 29) Other community, social and personal service activities; 30) Private households with employed persons; 31) Extra-territorial organizations and bodies. According to the industry classification 1993.

***, **, and * indicate statistical significance at the 1, 5, and 10 percent level.

We drop extreme outliers before running the regression (see Footnote 12). Weighted by mean establishment size.

A.5 Wage Cyclicalities at Different Percentiles

Table A.5 shows descriptive statistics for countercyclical and procyclical wage establishments. Procyclical establishments are on average somewhat larger than countercyclical establishments. However, in terms of most other statistics (e.g. share of skills or mean age), procyclical and countercyclical wage establishments resemble one another pretty much. Table A.6 shows the same descriptive statistics for quintiles of the wage cyclicalities distribution. It reveals an inverted U-shape for the mean establishment size. Both strongly countercyclical (≤ 20 th percentile) and strongly procyclical establishments (≤ 80 th percentile) are smaller than moderately cyclical establishments.

Table A.5: Descriptive Statistics for Pro- and Countercyclical Establishments of the Baseline Sample

Variable	Counter- cyclical	Pro- cyclical
Establishments	115,429	229,108
Mean establishment size	41.65	57.31
log(daily wage)	4.60	4.64
Low-skilled workers	12.46%	14.97%
Medium-skilled workers	74.13%	73.16%
High-skilled workers	13.40%	11.86%
Male workers	69.09%	71.21%
Mean tenure	19.83	25.46
Mean age	39.38	39.80

Note: The table shows statistics for establishments with countercyclical and procyclical wages. Statistics for the baseline sample are presented in Table A.1. Weighted by mean establishment size.

Table A.6: Descriptive Statistics for Quintiles of the Wage Cyclical Distribution of the Baseline Sample

Variable	$\leq 20^{th}$ percentile	$]20^{th}, 40^{th}[$ percentile	$[40^{th}, 60^{th}]$ percentile	$]60^{th}, 80^{th}[$ percentile	$\geq 80^{th}$ percentile
Establishments	68,907	68,908	68,907	68,908	68,907
Mean establishment size	35.71	54.32	70.67	61.24	38.39
log(daily wage)	4.60	4.61	4.64	4.64	4.65
Low-skilled workers	11.52%	14.02%	15.49%	15.19%	13.68%
Medium-skilled workers	73.91%	74.31%	73.65%	73.27%	71.55%
High-skilled workers	14.57%	11.67%	10.86%	11.54%	14.78%
Male workers	68.07%	70.43%	72.04%	70.67%	70.70%
Mean tenure	17.16	23.86	27.35	26.27	20.42
Mean age	39.27	39.55	39.86	39.86	39.67

Note: The table shows statistics for establishments in the quintiles of the wage cyclical distribution. Statistics for the baseline sample are presented in Table A.1. Weighted by mean establishment size.

Table A.7 shows the wage cyclical patterns for establishments at different percentiles of the wage cyclical distribution. In addition to estimating the cyclical of the average wage ($\hat{\alpha}_{1i}$), we also estimate the cyclical at the 25th and 75th percentile. The cyclical patterns at different percentiles are fairly similar to the average.

Table A.7: Wage Cyclical at Different Percentiles

Estimated coefficients:	$\hat{\alpha}_{1i}^{p25}$	$\hat{\alpha}_{1i}$	$\hat{\alpha}_{1i}^{p75}$
Cyclical at 10 th percentile	-0.99	-0.69	-0.82
Cyclical at 20 th percentile	-0.42	-0.27	-0.32
Cyclical at 30 th percentile	-0.15	-0.06	-0.07
Cyclical at 40 th percentile	0.04	0.09	0.10
Cyclical at 50 th percentile	0.19	0.22	0.24
Cyclical at 60 th percentile	0.34	0.35	0.39
Cyclical at 70 th percentile	0.53	0.49	0.55
Cyclical at 80 th percentile	0.79	0.69	0.79
Cyclical at 90 th percentile	1.30	1.06	1.25
Observations	344,036	344,371	344,410

Note: We drop extreme outliers before the calculation of this table (see Footnote 12).

Finally, Table A.8 shows the estimated relationship between wage cyclical and employment cyclical at different percentiles. The estimated connection is negative and statistically significant for the 25th and 75th percentile (although somewhat weaker for the

75th percentile). This is another sanity check that composition is not the key driver for our results.

Table A.8: Effect of Wage Cyclicity on Employment Cyclicity for Different Percentiles

Estimated Coefficient	$\hat{\gamma}_1^{p25}$	$\hat{\gamma}_1$	$\hat{\gamma}_1^{p75}$
Coefficient	-.325***	-0.460***	-.292***
R^2	0.01	0.01	0.01
Observations	344,036	344,293	344,410

Note: *** indicates statistical significance at the 1 percent level. Baseline regression result in bold. We drop extreme outliers before running the regression (see Footnote 12). Weighted by mean establishment size.

A.6 Worker Composition and Wages

Take the example from Section 4.3.3: An establishment with procyclical employment and completely fixed (acyclical) wages for two worker types: w_l for low-qualified workers and w_h for high-qualified workers, with $w_l < w_h$. If the establishment hires workers in a boom, keeping the share of low- and high-qualified workers in the establishment constant, the establishments' mean wage would not change. However, we would observe a countercyclical mean wage if the establishment increases the share of low-qualified workers in a boom. This scenario appears realistic because the unemployment rate of low-qualified workers is more volatile than for high-qualified workers in Germany (see, e.g., Röttger et al., 2019).

Let us assume the following scenario: a procyclical employment establishment (A) fires low-qualified workers in recessions and a countercyclical employment establishment (B) hires those workers. In this case, the mean wage (w_{it}) of establishment A would increase in recessions and the mean wage of establishment B would decrease due to the composition effect. However, in that case, the wage sum ($w_{it}n_{it}$) of establishment A would decrease in recessions (due to fewer workers n_{it}) and the wage sum of establishment B would increase (due to more workers). Hence, we would expect an inverted (or at least strongly dampened) cyclicity of the wage sum in comparison to the cyclicity of the mean wage if the composition effect is of first order importance.

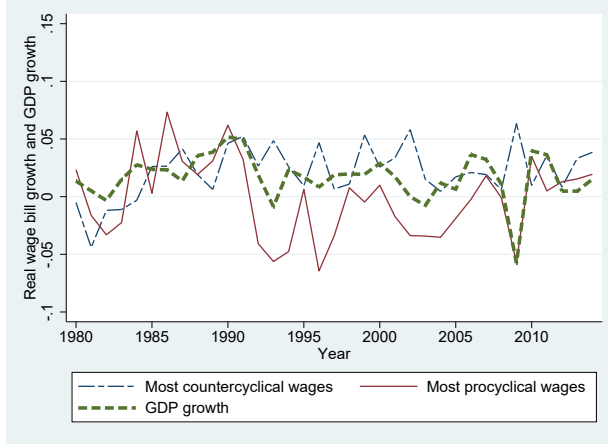
In order to check whether the composition effect could be the key driving force, Figure A.2.1 therefore shows the mean growth rate of the wage bill ($w_t n_t$ instead of w_t , see Figure A.2.2)⁴³ for the most procyclical and the most countercyclical establishments.

The mean growth rate of the wage bill continues to be procyclical in the first group and countercyclical in the last group, although both cyclicity patterns are a bit less pronounced

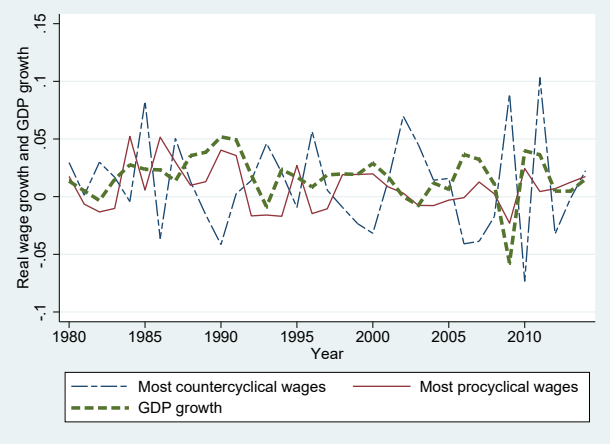
⁴³Figure A.2.2 is identical to Figure 1.1 from Section 1.

for the entire wage bill than for the establishments' mean wage. Since the dampening of the cyclicality is not strong, we see this as an additional evidence that the above described composition effect is not the key driver of our results.

Figure A.2: Mean Wage Sum and Mean Real Daily Wage Growth of the Establishments with the Most Procyclical and Most Countercyclical Wages



A.2.1: Mean Real Wage Sum Growth



A.2.2: Mean Real Daily Wage Growth

Note: West Germany (excluding Berlin), 1979-2014. Establishments with the most procyclical (countercyclical) wage are those equal to or above (below) the 80th (20th) percentile of our wage cyclicality measure α_{1i} in the given year (see Section 2.2). α_{1i} are estimated using the number of national full-time workers as the business cycle indicator (employment weighted results; extreme outliers dropped, see Footnote 12)

A.7 Selection of Unweighted Results

Table A.9: Wage Cyclicalilty at Different Disaggregation Levels

Estimated coefficients: $\hat{\alpha}_{1i}$	31 Sectors	National level
Cyclicalilty at 10 th percentile	−0.78	−1.01
Cyclicalilty at 20 th percentile	−0.32	−0.41
Cyclicalilty at 30 th percentile	−0.09	−0.09
Cyclicalilty at 40 th percentile	0.07	0.14
Cyclicalilty at 50 th percentile	0.20	0.32
Cyclicalilty at 60 th percentile	0.34	0.51
Cyclicalilty at 70 th percentile	0.49	0.73
Cyclicalilty at 80 th percentile	0.71	1.04
Cyclicalilty at 90 th percentile	1.12	1.61
Observations	344, 293	344, 126

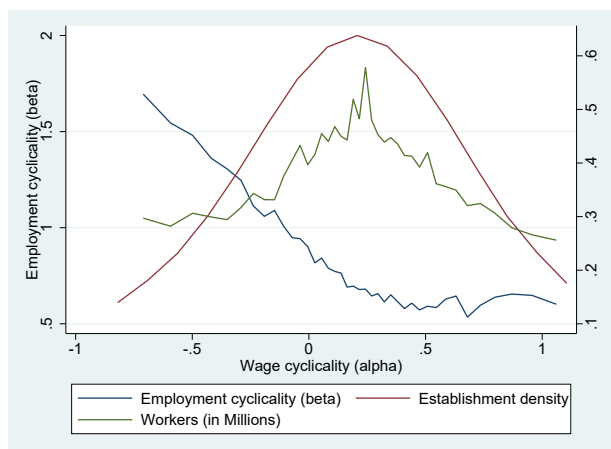
Note: We drop extreme outliers before the calculation of this table (see Footnote 12).

Table A.10: Employment Cyclicalilty at Different Disaggregation Levels

Estimated coefficients: $\hat{\beta}_{1i}$	31 Sectors	National level
Cyclicalilty at 10 th percentile	−2.40	−3.51
Cyclicalilty at 20 th percentile	−0.98	−1.39
Cyclicalilty at 30 th percentile	−0.30	−0.45
Cyclicalilty at 40 th percentile	0.19	0.19
Cyclicalilty at 50 th percentile	0.63	0.77
Cyclicalilty at 60 th percentile	1.12	1.43
Cyclicalilty at 70 th percentile	1.78	2.28
Cyclicalilty at 80 th percentile	2.80	3.56
Cyclicalilty at 90 th percentile	4.94	6.23
Observations	344, 293	344, 126

Note: We drop extreme outliers before the calculation of this table (see Footnote 12).

Figure A.3: Mean of Employment Cyclical Measure Along the Wage Cyclical Measure Distribution



Note: We divide the range of the wage cyclical measure ($\hat{\alpha}_{1i}$, see Section 3.1) into 50 bins. Each bin contains 1/50 of all observations, showing the mean. We drop extreme outliers (see Footnote 12). The figure is showing results for mean $\hat{\alpha}_{1i} \geq$ the 10th percentile and $\hat{\alpha}_{1i} \leq$ the 90th percentile of the estimated $\hat{\alpha}_{1i}$ (see Table 2).

A.8 Model Derivation

A.8.1 Establishment Maximization

Establishments maximize profits

$$E_0 \left\{ \sum_{t=0}^{\infty} \delta^t \left[a_t n_{it} - w_{it}^I (1 - \phi) n_{i,t-1} - c_{it} s_t \eta(\tilde{\varepsilon}_{it}) \left(\frac{\bar{w}^E(\tilde{\varepsilon}_{it})}{\eta(\tilde{\varepsilon}_{it})} + \frac{H(\tilde{\varepsilon}_{it})}{\eta(\tilde{\varepsilon}_{it})} + h \right) \right] \right\}, \quad (\text{A.3})$$

subject to the evolution of establishments' employment stock in every period:

$$n_{it} = (1 - \phi) n_{i,t-1} + c_{it} s_t \eta(\tilde{\varepsilon}_{it}). \quad (\text{A.4})$$

Let $\delta^t \lambda_t$ denote the Lagrange multiplier and take the first order derivative with respect to λ_t , $\tilde{\varepsilon}_{it}$, and n_{it} :

$$n_{it} = (1 - \phi) n_{i,t-1} + c_{it} s_t \eta(\tilde{\varepsilon}_{it}), \quad (\text{A.5})$$

$$-c_{it} s_t \left(\frac{\partial \bar{w}^E(\tilde{\varepsilon}_{it})}{\partial \tilde{\varepsilon}_{it}} + \frac{\partial H(\tilde{\varepsilon}_{it})}{\partial \tilde{\varepsilon}_{it}} + \frac{\partial \eta(\tilde{\varepsilon}_{it})}{\partial \tilde{\varepsilon}_{it}} h \right) + \lambda_t c_{it} s_t \frac{\partial \eta(\tilde{\varepsilon}_{it})}{\partial \tilde{\varepsilon}_{it}} = 0, \quad (\text{A.6})$$

$$a_t - \lambda_t + (1 - \phi) \delta E_t (\lambda_{t+1} - w_{it+1}^I) = 0. \quad (\text{A.7})$$

Isolating the Lagrange multiplier in Equation (A.6) yields:

$$\lambda_t = \frac{\frac{\partial \bar{w}^E(\tilde{\varepsilon}_{it})}{\partial \tilde{\varepsilon}_{it}} + \frac{\partial H(\tilde{\varepsilon}_{it})}{\partial \tilde{\varepsilon}_{it}} + \frac{\partial \eta(\tilde{\varepsilon}_{it})}{\partial \tilde{\varepsilon}_{it}} h}{\frac{\partial \eta(\tilde{\varepsilon}_{it})}{\partial \tilde{\varepsilon}_{it}}}. \quad (\text{A.8})$$

Keep in mind the three definitions:

$$\eta(\tilde{\varepsilon}_{it}) = \int_{-\infty}^{\tilde{\varepsilon}_{it}} f(\varepsilon) d\varepsilon, \quad (\text{A.9})$$

$$\bar{w}^E(\tilde{\varepsilon}_{it}) = \int_{-\infty}^{\tilde{\varepsilon}_{it}} w_t^E(\varepsilon) f(\varepsilon) d\varepsilon, \quad (\text{A.10})$$

$$H(\tilde{\varepsilon}_{it}) = \int_{-\infty}^{\tilde{\varepsilon}_{it}} \varepsilon f(\varepsilon) d\varepsilon. \quad (\text{A.11})$$

This allows us to simplify Equation (A.8), using the Fundamental Theorem of Calculus:

$$\lambda_t = \frac{w^E(\tilde{\varepsilon}_{it})f(\tilde{\varepsilon}_{it}) + \tilde{\varepsilon}_{it}f(\tilde{\varepsilon}_{it}) + f(\tilde{\varepsilon}_{it})h}{f(\tilde{\varepsilon}_{it})} \quad (\text{A.12})$$

$$= w^E(\tilde{\varepsilon}_{it}) + \tilde{\varepsilon}_{it} + h. \quad (\text{A.13})$$

When we substitute this Lagrange multiplier into Equation (A.7), we obtain the selection condition:

$$\tilde{\varepsilon}_{it} = a_t - w^E(\tilde{\varepsilon}_{it}) - h + (1 - \phi)\delta E_t (w^E(\tilde{\varepsilon}_{it+1}) + \tilde{\varepsilon}_{it+1} + h - w_{it+1}^I) \quad (\text{A.14})$$

Iterating $\tilde{\varepsilon}_{it}$ one period forward, substituting it into the right hand side of the equation and using the definition for

$$J_{it} = a_t - w_{it}^I + E_t \delta (1 - \phi) J_{it+1}, \quad (\text{A.15})$$

yields the selection condition, as shown in Equation (8) in the main part:

$$\tilde{\varepsilon}_{it} = a_t - w^E(\tilde{\varepsilon}_{it}) - h + E_t \delta (1 - \phi) J_{it+1}. \quad (\text{A.16})$$

A.8.2 Derivation of the Nash Wage

The Nash product is

$$\Lambda_t = (W_t - U_t)^\nu (J_t)^{1-\nu}, \quad (\text{A.17})$$

with

$$W_t - U_t = w_t - b + E_t \delta (1 - \phi - \eta_{t+1}) (W_{t+1} - U_{t+1}), \quad (\text{A.18})$$

and

$$J_t = a_t - w_t + E_t \delta (1 - \phi) J_{t+1}. \quad (\text{A.19})$$

Maximization of the Nash product with respect to the wage yields

$$\frac{\partial \Lambda_t}{\partial w_t} = \nu J_t \frac{\partial W_t}{\partial w_t} + (1 - \nu) (W_t - U_t) \frac{\partial J_t}{\partial w_t} = 0, \quad (\text{A.20})$$

$$\nu J_t = (1 - \nu) (W_t - U_t). \quad (\text{A.21})$$

After substitution:

$$\nu (a_t - w_t + E_t \delta (1 - \phi) J_{t+1}) = (1 - \nu) [w_t - b + E_t \delta (1 - \phi - \eta_{t+1}) (W_{t+1} - U_{t+1})]. \quad (\text{A.22})$$

Using Equation (A.21):

$$\nu (a_t - w_t + E_t \delta (1 - \phi) J_{t+1}) = (1 - \nu) \left[w_t - b + E_t \delta (1 - \phi - \eta_{t+1}) \frac{\nu}{(1 - \nu)} J_{t+1} \right], \quad (\text{A.23})$$

$$w_t = \nu (a_t + \delta \eta_{t+1} J_{t+1}) + (1 - \nu) b. \quad (\text{A.24})$$

A.9 Search and Matching with Decreasing Returns

In Section 2.2, we have shown that the wage cyclicalities across establishments are very heterogeneous. At the same time, at least 99 (90%) of all establishments with more than 50 (10) employees hire in any given year. In order to be in line with these stylized facts, we have chosen a selection model where different applicants have a different suitability (i.e., some have low training costs, while others have high training costs). Thus, establishments with less cyclical wages will hire a larger fraction of workers in a boom than establishments with more cyclical wages.

Would it be possible in the standard search and matching (SaM) model of the Mortensen and Pissarides (1994) type to have heterogeneous wage cyclicalities across establishments, while almost all establishments (above a certain size) hire in every period? Obviously, this is possible if establishments with different wage cyclicalities act in different labor market segments, as for example in Barnichon and Figura (2015). But can the standard SaM model explain this in a given labor market segment? Imagine that establishments with different wage cyclicalities act in the same labor market segment and that they are hit by the same aggregate shock. Imagine further that the economy moves into a boom and establishment A's wage increases by more than establishment B's wage. In this case, establishment B would face a higher expected present value than establishment A. Given that the market tightness, the worker-finding rate and thereby the hiring costs are a market outcome, only establishment B would be posting vacancies and hire, while establishment A would shut down its vacancy posting and hiring activity.⁴⁴ Thus, the standard random SaM model could not yield the outcome we find in the data.

⁴⁴The standard search and matching's job-creation condition is $\frac{\kappa}{q(\theta_t)} = a_t - w_t + E_t \delta (1 - \phi) \frac{\kappa}{q(\theta_{t+1})}$. Given that $\frac{\kappa}{q(\theta_t)}$ is market-determined, only the most profitable establishments will hire. Thus, different wage cyclicalities and joint hiring cannot coexist.

In order to reconcile the SaM model with the stylized facts above, we assume decreasing returns to labor. In such a world, an establishment with lower wages will hire more and the marginal product of labor will fall. Due to the compensating effect of the marginal product of labor, establishments with different wage cyclicalities may hire at the same time. We derive this type of model and analyze its quantitative implications.

A.9.1 Model Derivation

Establishments maximize the following intertemporal profit condition

$$E_0 \sum_{t=0}^{\infty} (a_t n_{it}^{\alpha} - w_{it} n_{it} - \chi v_{it}), \quad (\text{A.25})$$

where $\alpha < 1$ denotes the curvature of the production function and n_{it} is the establishment-specific employment stock. χ are vacancy posting costs and v_{it} is the number of vacancies at the establishment level. Establishments maximize profits subject to the employment dynamics equation:

$$n_{it} = (1 - \phi) n_{it-1} + v_{it} q(\theta_t). \quad (\text{A.26})$$

The first-order conditions with respect to n_{it} and v_{it} are:

$$(\alpha a_t n_{it}^{\alpha-1} - w_{it}) - \lambda_{it} + \beta E_t \lambda_{it+1} (1 - \phi) = 0, \quad (\text{A.27})$$

$$-\chi + \lambda_{it} q(\theta_t) = 0, \quad (\text{A.28})$$

where λ is the Lagrange multiplier.

Combining these two equations, we obtain the establishment-specific job-creation conditions:

$$\frac{\chi}{q(\theta_t)} = (\alpha a_t n_{it}^{\alpha-1} - w_{it}) + \beta E_t (1 - \phi) \frac{\chi}{q(\theta_{t+1})}. \quad (\text{A.29})$$

Under decreasing returns to labor, standard Nash bargaining does not work. Therefore, we impose the same ad-hoc wage formation rule as in the main part of the paper:

$$w_{it} = \kappa_i (a_t w^{norm}) + (1 - \kappa_i) w^{norm}, \quad (\text{A.30})$$

When we set $\kappa_i = 1$, wages comove one to one with productivity. When we set $\kappa_i < 1$, wages are less procyclical over the business cycle. As in the main part, we assume that there is a discrete number of different groups of establishments with different wage cyclicalities.

In order to establish an equilibrium, we have to aggregate across all firm types. The

aggregate number of vacancies and the aggregate employment are

$$v_t = \sum_{i=1}^E v_{it}, \quad (\text{A.31})$$

$$n_t = \sum_{i=1}^E n_{it}, \quad (\text{A.32})$$

the sum of vacancies/employment over all groups.

The aggregate job-finding rate for an unemployed worker is a function of the aggregate market tightness because we assume a Cobb-Douglas constant returns matching function, namely $m_t = \varkappa s_t^\psi v_t^{1-\psi}$. Thus: $p(\theta_t) = \varkappa \theta_t^{1-\psi}$ and $q(\theta_t) = \varkappa \theta_t^\psi$, with $\theta_t = v_t/s_t$.

Employed workers are defined as those who remain employed from the previous period and the new matches:

$$n_t = (1 - \phi) n_{t-1} + s_t p_t. \quad (\text{A.33})$$

All workers who search for a job and who are unable to match are defined as unemployed:

$$u_t = s_t (1 - p_t), \quad (\text{A.34})$$

A.9.2 Calibration and Numerical Results

We remain as close as possible to the calibration in the main part. We set the discount factor to $\delta = 0.99$ and the exogenous separation rate to $\phi = 0.07$. The aggregate productivity shock is drawn from a normal distribution with mean zero and the standard deviation is normalized to 1. The first-order autocorrelation coefficient is set to 0.8.

Due to the matching function and the decreasing returns, we require some additional parameters. We set the weight on vacancies in the matching function to $\psi = 0.65$. The curvature of the production function is set to $\alpha = 0.67$ and the steady state wage is normalized to 0.95 to be comparable to the value in the selection model ($\nu = 0.95$). Vacancy posting costs are normalized to 1 ($\chi = 1$) and the matching efficiency is chosen to fix the steady state unemployment rate of 0.08 ($\varkappa = 0.54$).

Independently, how we set κ_i , we obtain a $\hat{\gamma}_1 \simeq -3.2$ in our simulated model. In other words, the connection between wage cyclicalities and hiring rate cyclicalities is a lot larger than in the data (where $\hat{\gamma}_1 \simeq -0.46$). We will explain in the next subsection that this is related to the curvature of the production function. When we set a smaller value for α , we obtain a smaller $\hat{\gamma}_1$. However, it would have to be implausibly small in order to obtain the

target from the data.

A.9.3 Some Analytics

The key equation is the steady state job-creation condition:

$$\frac{\chi}{q(\theta)} (1 - \beta(1 - \phi)) = \alpha a n_i^{\alpha-1} - w_i, \quad (\text{A.35})$$

where the marginal product of labor is equal to $mpl = \alpha a n_i^{\alpha-1}$.

Given our calibration, we can plug in the numerical values:

$$\frac{\chi}{q(\theta)} (1 - \beta(1 - \phi)) = 0.67 n_i^{-0.33} - w_i. \quad (\text{A.36})$$

The left-hand side of the equation is purely market determined (i.e., exogenous to the individual establishment). Now assume two establishments with different wage cyclicalities. In establishment A, the wage does not move, while in establishment B, the wage goes up by 1%. How do these two establishments react to a 1% increase of aggregate productivity? In equilibrium, the right hand side of the equation has to adjust such that it is the same for all establishments, i.e., the adjustment of the marginal product of labor has to compensate for the wage differential.

Let's assume for illustration purposes that $mpl \approx w$. In this case, an one percent differential in the wage movement can roughly be compensated by a 3% differential in the establishment-specific employment movement. This is due to the typical calibration for the production function ($\alpha = 0.67$), which leads to an exponent of -0.33 for the mpl in Equation (A.36). Thus, the estimated coefficient can be expected to be around -3 .

What do we learn from this exercise? Under decreasing returns to scale, different wage cyclicalities can coexist. However, from a quantitative perspective, under the typical curvature of the production function, different wage movements lead to much stronger differences in employment movements than estimated in the data. The reason is that the adjustment happens via the marginal product of labor, which requires a sufficiently strong employment adjustment. This mechanism is absent in the selection model that we use in the main part where the adjustment happens via heterogeneous training costs. Thereby, the latter generates quantitative results that are closer to the estimations from the data.

A.10 Aggregation and Comparability of Data

A.10.1 Aggregation of Simulated Data

Due to the nature of our microeconomic (i.e. wage information is only available for the entire year if the employment spell lasts the entire year), we use annual data in our microeconomic estimations. However, as usual, we simulate our model economy at the quarterly frequency.

When we target $\hat{\gamma}_1 = -0.46$ in our calibration exercises, we aggregate the simulated data to an annual level to ensure comparability. We do so in line with the nature of the data.

In the dataset, establishment-level employment is defined as employment at the end of the respective year. Therefore, we also use the last of four quarters in the simulation when aggregating this information.

In the dataset, wages are defined as the average daily wage over four quarters (if the employment spell lasts for four quarters). Therefore, we also define the wage based on four quarters.

Based on these coherent definitions between data and model, we use these aggregated annual time series and estimate the connection between employment and wage cyclicity (based on log-differences of the annual time series). The distributional parameter χ is set such that we obtain the same estimated coefficient from our baseline regression based on simulated data as in the data ($\hat{\gamma}_1 = -0.46$).

A.10.2 Data Moments at Different Frequencies

Typically, business cycle moments are reported at the quarterly level and the much of the Shimer (2005) debate was using the Hodrick-Prescott filter. As we use an annual dataset in the empirical analysis, Figure A.11 shows the standard deviation of the hiring rate and the unemployment rate relative to the standard deviation of output based on different time frequencies and filtering techniques. Independently of the time frequency and the filtering technique, the amplification effects have a similar order of magnitude.

A.11 Equivalence between Selection and Search & Matching Model

This Appendix shows that the homogeneous version of the selection model used in our paper can be made equivalent to the standard search and matching model. Under certain distributional assumptions, which we use in the main part of the paper, there is global equivalence.⁴⁵ Thus, the insights from our model quantitative exercise are not only relevant

⁴⁵For a more general class of distributions, the dynamics of the job-finding rate dynamics in the homogeneous version of the selection model is equivalent to the job-finding rate dynamics in the search and matching model up to a first-order approximation (results are available on request).

Table A.11: Standard Deviations of Hiring Rate, Job-Finding Rate and Unemployment (all Relative to Real GDP)

	hr	u
Quarterly Data (HP Filter)	3.84	5.05
Annual Data (HP Filter)	4.66	4.69
Quarterly Data (First Differences)	4.68	4.04
Annual Data (First Differences)	4.57	5.71

Note: Observation period is 1979–2014. All variables are expressed in logs. The cyclical component is either calculated as log-differences or as deviations from the Hodrick-Prescott filter (with smoothing parameter 1600).

for the used selection model, but also for the more widely used class of search models with a matching function.

The proof in this section is based on Merkl and van Rens (2019). Assume a dynamic search and matching model with constant returns matching function:

$$m_t = v_t^{1-\psi} s_t^\psi,$$

where α is the elasticity of the matching function with respect to searching workers.

Furthermore, there are linear ex-ante vacancy posting costs, χ , and ex-post hiring costs, h . Given that vacancies are posted up to the point where the expected return of a vacancy equals the expected hiring costs, the following equation holds:

$$\frac{\chi}{q_t} = E_t \sum_{t=0}^{\infty} \delta^t (1 - \phi) (a_t - w_t) - h, \quad (\text{A.37})$$

where the left-hand side is the average value of ex-ante hiring costs (with $q_t = m_t/v_t$) and the right-hand side are the expected discounted value of profits minus the ex-post hiring costs.

In a selection model, the job-creation condition is:

$$\tilde{\varepsilon}_t = E_t \sum_{t=0}^{\infty} \delta^t (1 - \phi) (a_t - w_t) - h, \quad (\text{A.38})$$

where the left-hand side is the cutoff point of training costs up to which hiring takes place and the right-hand side is the equivalent discounted stream of profits.

Combining equations (A.37) and (A.38), we obtain the condition under which two models

are globally equivalent:

$$\tilde{\varepsilon}_t = \frac{\chi}{q_t}. \quad (\text{A.39})$$

In the search and matching models, the job-finding rate can be expressed as a function of market tightness (with $\theta_t = v_t/s_t$):

$$\eta_t = \theta_t^{1-\psi}. \quad (\text{A.40})$$

Combining equations (A.39) and (A.40), we obtain:

$$\frac{\chi}{q_t} = \chi \eta_t^{\frac{\psi}{1-\psi}} = \tilde{\varepsilon}_t. \quad (\text{A.41})$$

Thus, we have global equivalence for the job-finding rate if:

$$\eta_t = \left(\frac{\tilde{\varepsilon}_t}{\chi} \right)^{\frac{1-\psi}{\psi}}. \quad (\text{A.42})$$

We use this functional form for the cumulative distribution function (i.e. an inverse Pareto distribution) in the main part of the paper to have a selection model that provides globally equivalent dynamics of the job-finding rate and unemployment to a search and matching model.

References for Online Appendix

- Barnichon, R., Figura, A., 2015. Labor market heterogeneity and the aggregate matching function. *American Economic Journal: Macroeconomics* 7, 222–249.
- Card, D., Heining, J., Kline, P., 2015. CHK effects. FDZ-Methodenreport 06/2015 (en).
- Ellguth, P., Kohaut, S., Möller, I., 2014. The IAB Establishment Panel — methodological essentials and data quality. *Journal for Labour Market Research* 47, 27–41.
- Fischer, G., Janik, F., Müller, D., Schmucker, A., 2009. The IAB Establishment Panel — things users should know. *Schmollers Jahrbuch. Zeitschrift für Wirtschafts- und Sozialwissenschaften* 129, 133–148.
- Merkel, C., van Rens, T., 2019. Selective hiring and welfare analysis in labor market models. *Labour Economics* 57, 117–130.

- Mortensen, D.T., Pissarides, C.A., 1994. Job creation and job destruction in the theory of unemployment. *Review of Economic Studies* 61, 397–415.
- Röttger, C., Weber, B., Weber, E., 2019. Aktuelle Daten und Indikatoren: Qualifikationsspezifische Arbeitslosenquoten. Institute for Employment Research (IAB), http://doku.iab.de/arbeitsmarktdaten/qualo_2019.pdf.
- Schmucker, A., Seth, S., Ludsteck, J., Eberle, J., Ganzer, A., 2016. Establishment History Panel 1975–2014. FDZ-Datenreport 03/2016 (en).
- Shimer, R., 2005. The cyclical behavior of equilibrium unemployment and vacancies. *American Economic Review* 95, 25–49.
- Solon, G., Barsky, R., Parker, J.A., 1994. Measuring the cyclicity of real wages: How important is composition bias? *The Quarterly Journal of Economics* 109, 1–25.
- Stüber, H., 2017. The real wage cyclicity of newly hired and incumbent workers in Germany. *The Economic Journal* 127, 522–546.
- Stüber, H., Seth, S., 2018. The Administrative Wage and Labor Market Flow Panel. FAU Discussion Papers in Economics 01/2017 (updated December 2018).
- Stüber, H., Seth, S., 2019. The FDZ sample of the Administrative Wage and Labor Market Flow Panel 1976–2014. FDZ-Datenreport 01/2019 (en).
- Stüber, H., Seth, S., Stegmaier, J., 2020. The Administrative Wage and Labor Market Flow Panel extension for the IAB Establishment Panel 1993–2014. FDZ-Datenreport 07/2020 (en).